



National University
SOKENDAI
 The Graduate University for Advanced Studies

2018-2019



©JAXA



©KEK



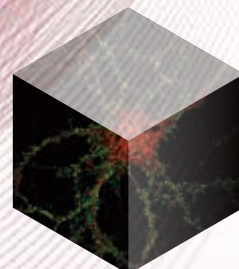
©KEK



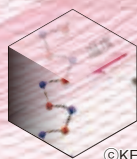
©NIFS



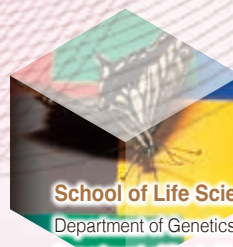
©NAOJ



©NIPR



©KEK



School of Cultural and Social Studies

- Department of Regional Studies
- Department of Comparative Studies
- Department of Japanese Studies
- Department of Japanese History
- Department of Japanese Literature

School of High Energy Accelerator Science

- Department of Accelerator Science
- Department of Materials Structure Science
- Department of Particle and Nuclear Physics

School of Life Science

- Department of Genetics
- Department of Basic Biology
- Department of Physiological Sciences

School of Physical Sciences

- Department of Structural Molecular Science
- Department of Functional Molecular Science
- Department of Astronomical Science
- Department of Fusion Science
- Department of Space and Astronautical Science

School of Multidisciplinary Sciences

- Department of Statistical Science
- Department of Polar Science
- Department of Informatics

School of Advanced Sciences

- Department of Evolutionary Studies of Biosystems



<https://www.soken.ac.jp/>

Contents

Message from the President	3
Inter-University Research Institutes participating in SOKENDAI	6
History	8
Organization	9
Administrative Organization	9
Research and Education System	11

● School of Cultural and Social Studies

School of Cultural and Social Studies	12
Regional Studies	12
Comparative Studies	13
Japanese Studies	13
Japanese History	14
Japanese Literature	14

● School of Physical Sciences

School of Physical Sciences	15
Structural Molecular Science	15
Functional Molecular Science	16
Astronomical Science	16
Fusion Science	17
Space and Astronautical Science	17

● School of High Energy Accelerator Science

School of High Energy Accelerator Science	18
Accelerator Science	18
Materials Structure Science	19
Particle and Nuclear Physics	19

● School of Multidisciplinary Sciences

School of Multidisciplinary Sciences	20
Statistical Science	20
Polar Science	21
Informatics	21

● School of Life Science

School of Life Science	22
Genetics	22
Basic Biology	23
Physiological Sciences	23

● School of Advanced Sciences

School of Advanced Sciences	24
Evolutionary Studies of Biosystems	24

Educational Programs	25
Society and Community Outreach Activities	28
The Center for Educational Development	30
The Center for Academic Information Services	31
University Library	31
Division of Information Services and Technology	32
Data Book	33
Access	40



Message from the President



SOKENDAI (The Graduate University for Advanced Studies) is a graduate university with no undergraduate programs that consists of departments housed in affiliated Inter-University Research Institutes and the School of Advanced Sciences attached directly to SOKENDAI. The Inter-University Research Institutes are research centers for joint use by universities throughout Japan in their various research fields. As such, these institutes serve as centers of advanced research in their respective research fields and as nodes of scholarly communication that support international joint research. The School of Advanced Sciences, which is located in Hayama and has no such parent institute, conducts advanced research into the evolution of life and the relationship between science and society.

SOKENDAI was founded in October 1988 on the internationally unprecedented idea of educating graduate students at outstanding centers of research to cultivate future generations of scholars. The year 2018 will thus mark SOKENDAI's 30th anniversary.

At SOKENDAI, students are educated at Japan's leading centers of research. Their lives are very different from those of students in graduate programs attached to ordinary undergraduate faculties, especially for students who enroll in our five-year programs straight from their undergraduate studies and pursue their graduate studies and research surrounded by professional researchers and scholars. Faculty outnumber students by more than two-to-one. Students have access not only to equipment and materials unavailable elsewhere but also to a community of top-ranked scholars. While this environment provides amazing opportunities for doctoral dissertation research, it may also be more stressful in some ways than an ordinary university.

This is why every department, with the full support of SOKENDAI, looks after its students and takes steps to ensure that time spent in the department is productive and enjoyable. All our students are encouraged to take full advantage of this distinctive research environment as they pursue their doctoral dissertation research.

"Advanced specialities and expertise," "broad perspective," and "international competitiveness" have been the educational goals of SOKENDAI since its founding. As mentioned above, students are educated at centers of research, so "Advanced specialities and expertise" and "international competitiveness" are perhaps something they naturally learn. But what of a "broad perspective"? A "broad perspective" entails the ability to explain one's object of research in the broader terms of human intellectual activity in general and to envision new horizons that transcend current disciplinary boundaries. Acquiring these abilities in the course of writing a doctoral dissertation can be hard. Still, I hope students will endeavor to gain this broader perspective at every opportunity by taking full advantage of SOKENDAI's unique characteristics, including its various departments that collectively encompass a broad range of intellectual fields, from energy, materials, space, and life to information, history and culture.

Universities and basic research in Japan today face challenging circumstances. Likewise, there are issues regarding SOKENDAI's future growth as an institution of higher learning that need our serious attention. Yet, whatever difficult challenges may lie ahead in this uncertain age, we will face them each and every day as first-class researchers and scholars dedicated to working in cooperation with everyone concerned to produce future generations of global professionals.

April 1, 2018

A handwritten signature in black ink that reads "M. Hasegawa".

Hasegawa, Mariko, Ph. D.
President

SOKENDAI (The Graduate University for Advanced Studies)

Profile

Graduation from School of Science, University of Tokyo.

Ph.D. degree in Anthropology from Graduate School of Science, University of Tokyo.

Worked at the Tanzania Wildlife Service, as an assistant at the Laboratory of Anthropology, Department of Biological Science, Graduate School of Science, University of Tokyo.

She taught as an associate professor and professor at Senshu University, as an associate professor at the Department of Anthropology at Yale University and as a professor at the School of Political Science and Economics, Waseda University, became a professor at the Graduate University for Advanced Studies in 2006, in 2007 dean of Department of Evolutionary Studies of Biosystems at the Graduate University for Advanced Studies, in 2011 then dean of School of Advanced Sciences, became Executive Director at the Graduate University for Advanced Studies in 2014. From April in 2017, became President of the Graduate University for Advanced Studies.

She specialized in Behavioral Ecology and Physical Anthropology, conducted research on wild chimpanzee, fallow deer and wild sheep in Great Britain, peafowl in Sri Lanka. Recently she is conducting research on human evolution and adaptation.

In 2008, she became President of the Human Behavior and Evolution Society of Japan and received the Hidaka Award from the Japan Ethological Society in 2012.



Main features of SOKENDAI (The Graduate University for Advanced Studies)

Unique doctoral programs

- Five-year and three-year Ph.D. programs
- Education programs carried out at cutting-edge research institutes
- Tailor-made education programs
- Flexible education programs for working professionals and foreign students

Fostering advanced specialties and expertise

- Specialized education programs in diverse fields
- Supervision by leading researchers from each field
- Top-level collection of archives, equipment, and facilities provided by Inter-University Research Institutes

Broadening perspective

- “SOKENDAI Freshman Course,” an intensive course for all first-year students
- Joint education among departments and schools
- Cross-disciplinary education through distance learning systems
- “Joint School Seminars” for interdisciplinary research exchanges among departments

Achieving international competitiveness

- Education at the hub of international research collaborations
- Courses focused on academic communication
- “SOKENDAI Short-term Research Abroad & Long-term Internship Program”

Creating advanced research fields

- Interdepartmental education programs
- International research collaborations coordinated by School of Advanced Sciences
- University-wide “Science and Society” program

Establishment Objectives / Purpose of Establishment

In recent years, there has been a strong demand for the promotion of original and international research and the opening up of advanced scientific fields that transcend the boundaries of existing scientific disciplines.

SOKENDAI (The Graduate University for Advanced Studies), the first of its kind in Japan, was established to cultivate researchers capable of responding to such demands. It offers the advantage of enabling students to carry out research in the most advanced research environment of Inter-University Research Institutes, which operate under the auspices of the Ministry of Education, Culture, Sports, Science and Technology (MEXT). These institutes conduct advanced research in a variety of fields, and play a central role in the promotion of joint research.

SOKENDAI was established to foster creative international researchers with wide-ranging vision who are capable of leading the latest trends in research.

The University will promote original and international research and open up new scientific fields that transcend the boundaries of existing scientific disciplines.



Inter-University Research Institutes

Inter-University Research Institutes (referred to as "IURI" hereafter) house large scale, high-technical facilities, high-level laboratories, or various academic data and archives. They are accessible for any university researchers who would collaboratively interact each other, using these facilities.

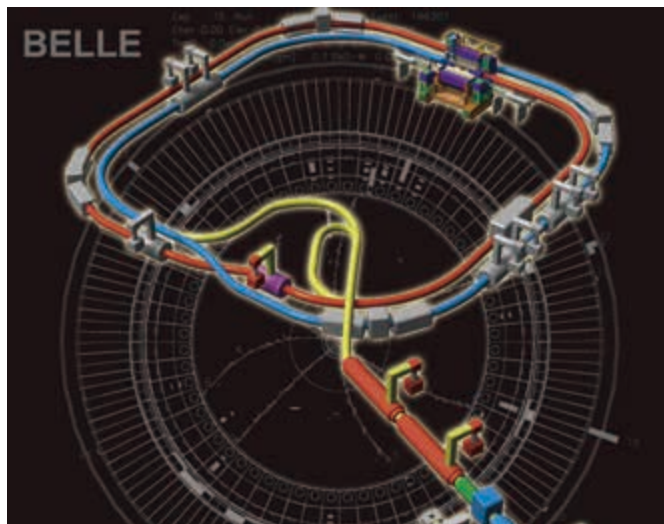
Have you ever heard, either on TV or in a newspaper, of the Subaru telescope, on the island of Hawaii, or of the observation vessel, SHIRASE, heading to the South Pole? Both of them are related to IURI, affiliated with SOKENDAI; the Subaru telescope was established by the National Astronomical Observatory, and the polar observation is carried out by the National Institute of Polar Research.

Most of the research activities involve fundamental scientific studies which demand large-scale facilities and a large budget. IURIs have a great number of researchers and a large amount of research grants are made available to carry out original and advanced scientific research.



Advanced specialist education in research facilities and general education cultivating broad views

Ph. D. programs at SOKENDAI provide an ideal education and research environment, offering direct access to large-scale or special experiment/observation facilities, as well as academic materials and data at world-class research institutes in Japan (IURI). In our Ph. D. programs, students can be in daily communication with cutting-edge researchers in Japan and abroad as one of the leading international research centers. Having 2~3 faculty members per student, SOKENDAI offers, in a custom-made manner, both advanced specialist education and general education cultivating broad views.



Inter-University Research Institutes participating in SOKENDAI (The Graduate University for Advanced Studies)

① The Graduate University for Advanced Studies [Hayama campus]

The Center for Educational Development
The Center for Academic Information Services
University Library
Department of Evolutionary Studies of Biosystems (School of Advanced Sciences)
Shonan Village, Hayama, Kanagawa, 240-0193 Japan
TEL: 81-46-858-1500
FAX: 81-46-858-1542
URL: <https://www.soken.ac.jp>

② National Institutes for the Humanities National Museum of Ethnology

Department of Regional Studies
Department of Comparative Studies (School of Cultural and Social Studies)
10-1 Senri Expo Park, Suita, Osaka, 565-8511 Japan
TEL: 81-6-6878-8236
URL: <http://www.minpaku.ac.jp>

③ National Institutes for the Humanities International Research Center for Japanese Studies

Department of Japanese Studies (School of Cultural and Social Studies)
3-2 Oeyama-cho, Goryo, Nishikyoku, Kyoto, 610-1192 Japan
TEL: 81-75-335-2222
URL: <http://www.nichibun.ac.jp/en/>

④ National Institutes for the Humanities National Museum of Japanese History

Department of Japanese History (School of Cultural and Social Studies)
117 Jonai-cho, Sakura-shi, Chiba, 285-8502 Japan
TEL: 81-43-486-0123
URL: <http://www.rekihaku.ac.jp>

⑤ National Institutes for the Humanities National Institute of Japanese Literature

Department of Japanese Literature (School of Cultural and Social Studies)
10-3, Midori-cho, Tachikawa, Tokyo, 190-0014 Japan
URL: <http://www.nijl.ac.jp>

⑥ National Institutes of Natural Sciences Institute for Molecular Science

Department of Structural Molecular Science
Department of Functional Molecular Science (School of Physical Sciences)
URL: <https://www.ims.ac.jp/en/>

⑦ National Institutes of Natural Sciences National Institute for Basic Biology

Department of Basic Biology (School of Life Science)
URL: <http://www.nibb.ac.jp/en>

⑧ National Institutes of Natural Sciences National Institute for Physiological Sciences

Department of Physiological Sciences (School of Life Science)
URL: <http://www.nips.ac.jp/eng>
38 Nishigonaka, Myodaiji, Okazaki, 444-8585 Japan
TEL: 81-564-55-7000

⑨ National Institutes of Natural Sciences National Astronomical Observatory

Department of Astronomical Science (School of Physical Sciences)
2-21-1 Osawa, Mitaka, Tokyo, 181-8588 Japan
TEL: 81-422-34-3600
URL: <http://www.nao.ac.jp>

⑩ National Astronomical Observatory (Mizusawa)

2-12 Hoshigaoka, Mizusawa, Oshu, Iwate, 023-0861 Japan
TEL: 81-197-22-7111

⑪ National Astronomical Observatory (Nobeyama)

462-2 Nobeyama, Minamimakimura, Minamisaku, Nagano, 384-1305 Japan
TEL: 81-267-98-4300

⑫ National Astronomical Observatory (Hawaii'i)

650 North A'ohoku Place, Hilo, Hawaii 96720 U.S.A.
TEL: 1-808-934-7788

⑬ National Astronomical Observatory (Chile)

Calle Joaquin Montero 3000, Oficina 702, Vitacura, Santiago, Chile
TEL: 56-2-2656-9253

⑭ National Institutes of Natural Sciences National Institute for Fusion Science

Department of Fusion Science (School of Physical Sciences)
322-6, Oroshi-cho, Toki, Gifu, 509-5292 Japan
TEL: 81-572-58-2222
URL: <http://www.nifs.ac.jp>

⑮ Japan Aerospace Exploration Agency Institute of Space and Astronautical Science

Department of Space and Astronautical Science (School of Physical Sciences)
3-1-1, Yoshinodai, Chuo-ku, Sagami-hara, Kanagawa, 252-5210 Japan
TEL: 81-42-759-8012
URL: <http://www.isas.jaxa.jp/sokendai/e/>

⑯ High Energy Accelerator Research Organization (Tsukuba Campus)

Accelerator Laboratory · Applied Research Laboratory
Department of Accelerator Science (School of High Energy Accelerator Science)
Institute of Materials Structure Science
Department of Materials Structure Science (School of High Energy Accelerator Science)
Institute of Particle and Nuclear Studies
Department of Particle and Nuclear Physics (School of High Energy Accelerator Science)
1-1 Oho, Tsukuba, Ibaraki, 305-0801 Japan
TEL: 81-29-864-1171 or 5128
URL: <http://www.kek.jp>

⑰ High Energy Accelerator Research Organization (Tokai Campus)

203-1 Oaza-Shirakata, Tokai-Mura, Naka-gun, Ibaraki, 319-1106 Japan

⑱ Research Organization of Information and Systems The Institute of Statistical Mathematics

Department of Statistical Science (School of Multidisciplinary Sciences)
10-3 Midori-cho, Tachikawa, Tokyo, 190-8562 Japan
TEL: 81-50-5533-8500
URL: http://www.ism.ac.jp/index_e.html

⑲ Research Organization of Information and Systems National Institute of Polar Research

Department of Polar Science (School of Multidisciplinary Sciences)
10-3 Midori-cho, Tachikawa, Tokyo, 190-8518 Japan
TEL: 81-42-512-0608
URL: <http://www.nipr.ac.jp>

⑳ National Institute of Polar Research SYOWA STATION

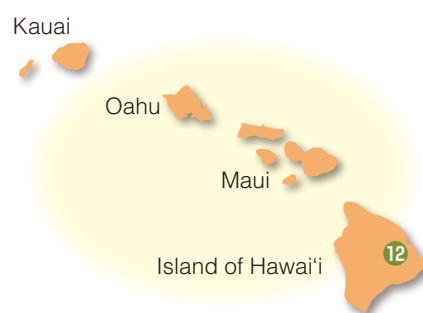
Department of Polar Science (School of Multidisciplinary Sciences)

㉑ Research Organization of Information and Systems National Institute of Informatics

Department of Informatics (School of Multidisciplinary Sciences)
2-1-2 Hitotsubashi, Chiyoda-ku, Tokyo, 101-8430 Japan
TEL: 81-3-4212-2110
URL: <https://www.nii.ac.jp/en/>

㉒ Research Organization of Information and Systems National Institute of Genetics

Department of Genetics (School of Life Science)
1111 Yata, Mishima, Shizuoka, 411-8540 Japan
TEL: 81-55-981-6720
URL: <https://www.nig.ac.jp>



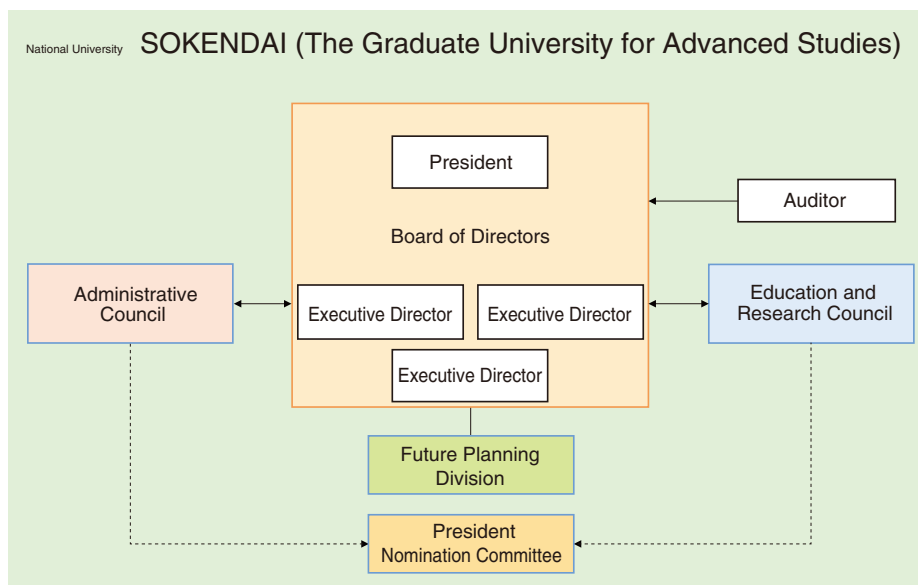


History

June 1982	An informal committee of the directors general of international university research institutes issues an appeal for the introduction of post-graduate courses in the institutes.	April 1999	The School of Cultural Studies changes its name to "The School of Cultural and Social Studies." The Department of Japanese History is established in the School of Cultural and Social Studies, and The Department of Particle and Nuclear Physics is established in the School of Mathematical and Physical Science; matriculation begins in both new Departments. The School of Advanced Sciences commences matriculation.
April 1986	An informal committee of the directors general of inter-national university research institutes produces a summary of the basic concepts of a postgraduate school for advanced studies based on the results of an investigation by a working group set up to investigate issues related to postgraduate schools. An Office and Committee for the Investigation of the Preparation of the Establishment of a Postgraduate School for Advanced Studies are established at Okazaki National Research Institutes.	June 1999	Construction is completed on the research building for the School of Advanced Sciences.
March 1987	The Committee for the Investigation of the Preparation of the Establishment of a Postgraduate School for Advanced Studies produces a summary of the basic concepts of a postgraduate school for advanced studies.	April 2001	Dr. Kodaira, Keiichi is appointed as the third President. The Department of Cyber Society and Culture (School of Cultural and Social Studies) is established; matriculation begins.
May 1987	An Office and Committee for Preparation of the Establishment of a Postgraduate School for Advanced Studies are established at Okazaki National Research Institutes.	July 2001	Construction of the University Library (1,427m ²) begins at the Hayama Campus.
July 1987	The Committee for Preparation of the Establishment of a Postgraduate School for Advanced Studies produces an interim summary on the preparation of the establishment of a tentatively named the Graduate University for Advanced Studies.	February 2002	Construction of the University Library is completed.
April 1988	An Office and Committee for Preparation of the Establishment of the Graduate University for Advanced Studies are established at Okazaki National Research Institutes.	April 2002	Department of Informatics established in the School of Mathematical and Physical Science; matriculation begins.
May 1988	The "Law to amend part of the National School Establishment Law" (Law No. 63, 1988), which stipulates the establishment of the Graduate University for Advanced Studies, is announced and enacted.	April 2003	Department of Japanese Literature (School of Cultural and Social Studies), and the Department of Space and Astronautical Science (School of Mathematical and Physical Science) are established; matriculation begins.
September 1988	The Committee for Preparation of the Establishment of the Graduate University for Advanced Studies produces a summary of the preparation of the establishment of the Graduate University for Advanced Studies.	October 2003	"The National University Corporation Law (Law No. 112 of 2003)" is promulgated and enforced.
October 1988	The Graduate University for Advanced Studies is inaugurated. The central administration office is established at the Tokyo Institute of Technology (Nagatsuda Campus). School of Mathematical and Physical Science •Department of Statistical Science •Department of Accelerator Science •Department of Synchrotron Radiation Science •Department of Structural Molecular Science •Department of Functional Molecular Science School of Life Science •Department of Genetics •Department of Molecular Biomechanics •Department of Physiological Science	April 2004	Reformation into the National University Corporation, Graduate University for Advanced Studies Dr. Sc. Kodaira, Keiichi is reappointed as the President of the University. The School of Mathematical and Physical Science is reformed into three schools: the School of Physical Science (including the departments of Structural Molecular Science, Functional Molecular Science, Astronomical Science, Fusion Science and Space and Astronautical Science), the School of High Energy Accelerator Science (including the departments of Accelerator Science, Materials Structure Science, Particle and Nuclear Physics), and the School of Multidisciplinary Science (including the departments of Statistical Science, Polar Science and Informatics). The School of Life Science has implemented the five-year Ph.D. program system in addition to the three-year system. The School has begun to accept students.
	(The university commences matriculation from April 1989.) Dr. Nagakura, Saburo is appointed as the first President of the University.	April 2005	The name of the Department of Molecular Biomechanics at the School of Life Science has changed to the Department of Basic Biology.
April 1989	The School of Cultural and Social Studies is established with the Department of Regional Studies and Department of Comparative Studies. The University commences matriculation of students for three schools.	April 2006	The School of Physical Sciences, the School of High Energy Accelerator Science, and the School of Multidisciplinary Sciences have implemented the five-year Ph.D. program system in addition to the three-year system. The Schools have begun to accept students.
April 1991	The Coordination Center for Research and Education is established.	April 2007	The School of Advanced Sciences has reorganized the Department of Biosystems Science and the Department of Photo Science (both have provided only 3-year doctoral course) into the Department of Evolutionary Studies of Biosystems (which offers both 3-year and 5-year doctoral course) and started accepting students into the new department.
April 1992	The Department of Japanese Studies (School of Cultural and Social Studies), and the Departments of Astronomical Science and Fusion Science (School of Mathematical and Physical Science) are established; matriculation begins.	April 2008	Dr. Takahata, Naoyuki has been appointed as the fourth President.
April 1993	The Department of Polar Science (School of Mathematical and Physical Science) is established; matriculation begins.	April 2009	The Department of Cyber Society and Culture has stopped accepting new students.
February 1994	Land in Hayama, Kanagawa (27,000m ²), is donated by Mitsui Fudosan Ltd. to allow the construction of the University's central administration office, as a result of the mediation services of the Kanagawa prefectural government.	March 2010	Construction of the Center for the Promotion of Integrated Sciences(1,033m ²) begins at the Hayama Campus.
March 1994	Construction of the central administration office (4,205m ²) begins at the Hayama Campus.	April 2010	The name of Hayama Center for Advanced Studies has changed to the Center for the Promotion of Integrated Sciences.
June 1994	The Information Center for Research and Education is established.	January 2011	Construction of the Center for the Promotion of Integrated Sciences is completed.
February 1995	Administrative functions are transferred from Nagatsuda Campus to Hayama; construction is completed on the central administration building.	April 2013	Information Services and Technology Center is established.
April 1995	Dr. Hirota, Eizi is appointed as the second President.	April 2014	Dr. Okada, Yasunobu has been appointed as the fifth President.
April 1997	The School of Advanced Sciences, with the Department of Biosystems Science, is established at the Hayama Campus (matriculation begins in April 1999).	July 2015	The Center for Academic Information Services is established by unification of the University Library and the Information Services and Technology Center.
April 1998	The Department of Photoscience (School of Advanced Sciences) is established (matriculation begins in April 1999). The Department of Synchrotron Radiation Science changes its name to "The Department of Materials Structure Science."	March 2017	Department of Cyber Society and Culture abolished. (Dept. operation period from 2001.4.1 to 2017.3.31)
September 1998	Construction of the School of Advanced Sciences building for research (3,060m ²) begins at the Hayama Campus.	April 2017	Dr. Hasegawa, Mariko has been appointed as the sixth President.
		March 2018	The Center for Educational Development is established.
		April 2018	The Center for the Promotion of Integrated Sciences is abolished.

Organization

Administrative Organization



Administrative Board

As of April 1, 2018

President
 Executive Director
 Executive Director
 Executive Director
 Auditor
 Auditor

Hasegawa, Mariko
 Nakamura, Yukio
 Nagata, Takashi
 Ogawa, Yujiro
 Takeda, Hiroshi
 Nakamoto, Fuminori

Vice President Nagata, Takashi

School of Cultural and Social Studies

Dean Yamashita, Noriko
 Chair, Department of Regional Studies Saito, Akira
 Chair, Department of Comparative Studies Udagawa, Taeko
 Chair, Department of Japanese Studies Takii, Kazuhiro
 Chair, Department of Japanese History Sakamoto, Minoru
 Chair, Department of Japanese Literature Ochiai, Hiroshi

School of Physical Sciences

Dean Uozumi, Yasuhiro
 Deputy Dean Tomisaka, Kohji
 Chair, Department of Structural Molecular Science Aono, Shigetoshi
 Chair, Department of Functional Molecular Science Kawai, Maki
 Chair, Department of Astronomical Science Tsuneta, Saku
 Chair, Department of Fusion Science Takeiri, Yasuhiko
 Chair, Department of Space and Astronautical Science Dotani, Tadayasu

School of High Energy Accelerator Science

Dean Kamiyama, Takashi
 Deputy Dean Uno, Shoji
 Chair, Department of Accelerator Science Honda, Tohru
 Chair, Department of Materials Structure Science Kishimoto, Shunji
 Chair, Department of Particle and Nuclear Physics Hashimoto, Shoji

School of Multidisciplinary Sciences

Dean Yoneda, Tomohiro
 Deputy Dean Nakano, Junji
 Chair, Department of Statistical Science Miyasato, Yoshihiko
 Chair, Department of Polar Science Motoyama, Hideaki
 Chair, Department of Informatics Inoue, Katsumi

School of Life Science

Dean Furuse, Mikio
 Deputy Dean Yoshimura, Yumiko
 Chair, Department of Genetics Katsura, Isao
 Chair, Department of Basic Biology Yamamoto, Masayuki
 Chair, Department of Physiological Sciences Imoto, Keiji

School of Advanced Sciences

Dean Sasaki, Akira
 Chair, Department of Evolutionary Studies of Biosystems Arikawa, Kentaro

University Library

Acting Director Nakamura, Yukio
 Deputy Director Yagyū, Shuji

The Center for Educational Development

Director Nagata, Takashi

The Center for Academic Information Services

Acting Director Nakamura, Yukio

Future Planning Division

Manager Nakamura, Yukio

Administration Bureau

Secretary-General Higano, Takashi
 Manager, General Planning Division Yamashita, Katsuhiko
 Manager, General Affairs Division Kobayashi, Jun
 Manager, Financial Affairs Division Maeda, Terunobu
 Manager, Academic and Students Affairs Division Itaba, Naoaki

Education and Research Council As of April 1, 2018

President	Hasegawa, Mariko
Executive Director	Nakamura, Yukio
Executive Director (Executive Vice President)	Nagata, Takashi
Executive Director	Ogawa, Yujiro
Dean, School of Cultural and Social Studies	Yamashita, Noriko
Dean, School of Physical Sciences	Uozumi, Yasuhiro
Dean, School of High Energy Accelerator Science	Kamiyama, Takashi
Dean, School of Multidisciplinary Sciences	Yoneda, Tomohiro
Dean, School of Life Science	Furuse, Mikio
Dean, School of Advanced Sciences	Sasaki, Akira
Chair, Department of Comparative Studies	Udagawa, Taeko
Chair, Department of Japanese Studies	Takii, Kazuhiko
Chair, Department of Japanese History	Sakamoto, Minoru
Chair, Department of Japanese Literature	Ochiai, Hiroshi
Chair, Department of Functional Molecular Science	Kawai, Maki
Chair, Department of Astronomical Science	Tsuneta, Saku
Chair, Department of Fusion Science	Takeiri, Yasuhiko
Professor, Department of Space and Astronautical Science	Inatomi, Yuko
Chair, Department of Accelerator Science	Honda, Tohru
Chair, Department of Materials Structure Science	Kishimoto, Shunji
Professor, Department of Particle and Nuclear Physics	Tokushuku, Katsuo
Chair, Department of Statistical Science	Miyasato, Yoshihiko
Chair, Department of Polar Science	Motoyama, Hideaki
Chair, Department of Informatics	Inoue, Katsumi
Chair, Department of Genetics	Katsura, Isao
Chair, Department of Basic Biology	Yamamoto, Masayuki
Chair, Department of Physiological Sciences	Imoto, Keiji
Chair, Department of Evolutionary Studies of Biosystems	Arikawa, Kentaro
Professor, Department of Comparative Studies	Yoshida, Kenji
Professor, Department of Japanese Studies	Komatsu, Kazuhiko
Professor, Department of Japanese History	Kurushima, Hiroshi
Professor, Department of Statistical Science	Higuchi, Tomoyuki
Professor, Department of Polar Science	Nakamura, Takuji
Counselor	Robert Campbell

Administrative Council As of April 1, 2018

Internal representatives

President	Hasegawa, Mariko
Executive Director	Nakamura, Yukio
Executive Director (Executive Vice President)	Nagata, Takashi
Executive Director	Ogawa, Yujiro
Secretary-General	Higano, Takashi

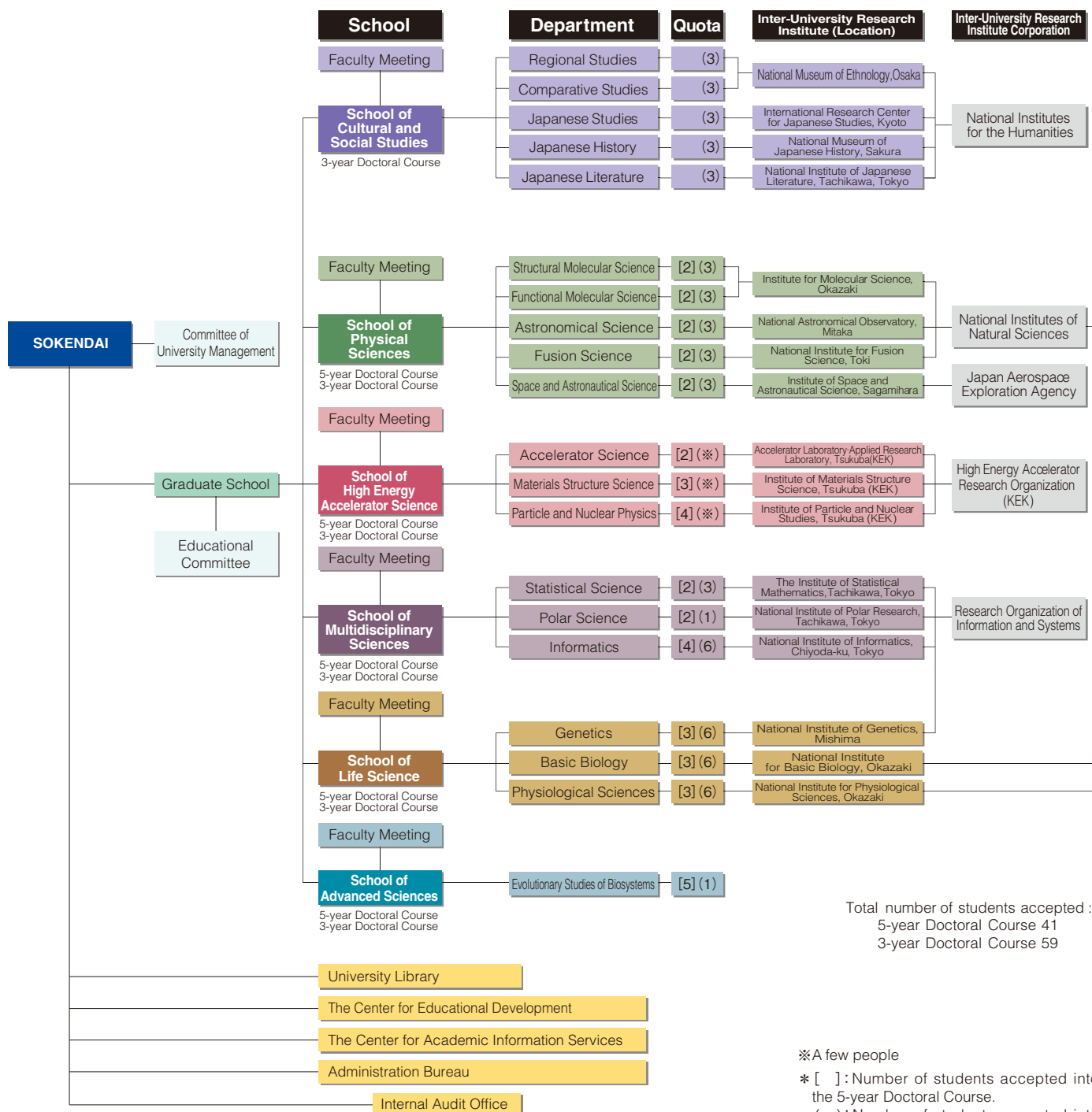
External academics and specialists

Executive Director and Vice President, The University of Tokyo	Arinobu, Mutsuhiro
Vice Trustee, Nagoya University	Isoda, Fumio
Professor, Faculty of Letter, Konan University	Inose, Kumie
Director General, National Institute of Informatics, Research Organization of Information and Systems	Kitsuregawa, Masaru
Senior Corporate Adviser, Mitsubishi Estate Co., Ltd.	Kimura, Keiji
Executive Director, Institute of Space and Astronautical Science, Japan Aerospace Exploration Agency	Kuninaka, Hitoshi
President, National Institutes of Natural Sciences	Komori, Akio
Inspector General, Japan Society for the Promotion of Science	Nishikawa, Keiko
President, National Institutes for the Humanities	Hirakawa, Minami
President, Research Organization of Information and Systems	Fujii, Ryoichi
President, High Energy Accelerator Research Organization	Yamauchi, Masanori
President, Shizenkan University Graduate School of Leadership & Innovation	Monte Cassim

Research and Education System

SOKENDAI is affiliated with parent institutes (“Kiban Kikan,” in Japanese), consisting of Inter-University Research Institutes operated by four Inter-University Research Institute Corporations and one research institute of the Japan Aerospace Exploration Agency. SOKENDAI offers both a “dispersed” and an “integrated” research and education system: “dispersed” in that research and education on discipline-specific, advanced are carried out at each parent institute; “integrated” in that interdisciplinary research and education, including those in disciplines in which the parent institutes specialize, are provided. SOKENDAI also offers interschool/departmental education programs that meet new academic wishes and development.

University Organization (2018)



School of Cultural and Social Studies

By providing comprehensive research and educational programs on the human cultural activities and the relationship among human, society, technology, and nature, the School aims to encourage outstanding researchers who can compete internationally and can offer broad perspectives as well as those who can contribute to the society by using advanced research techniques in which they were trained.

School of Cultural and Social Studies

The School of Cultural and Social Studies is the only humanities school at SOKENDAI.

The School is comprised of the following five departments affiliated with 4 research institutes: Department of Regional Studies and Department of Comparative Studies affiliated with National Museum of Ethnology, Department of Japanese Studies affiliated with International Research Center for Japanese Studies, Department of Japanese History affiliated with National Museum of Ethnology and Department of Japanese Literature affiliated with National Institute of Japanese Literature.

The School not only conducts study and research at each research institute, but also conducts collaborative activities as an entire school. The School is playing an important role of conducting cultural and social studies at SOKENDAI based on a wide variety of academic expertise, and is disseminating the study achievements through methods such as publishing the academic journal "SOKENDAI Review of Cultural and Social Studies", holding the interdisciplinary exchange program "SOKENDAI Cultural Forum" hosted by each institute in rotation, and implementing the special education program "Academic Resource Management Course".

In addition, the School only accepts students for the second term of a doctoral course (Doctor) while the other schools at SOKENDAI adopt a five-year system accepting students for the first term of a doctoral course (Master).

Department of Regional Studies

The Department, affiliated with the National Museum of Ethnology, Japan, offers opportunities to study individual societies and cultures in Asia, Europe, Africa, the Americas and Oceania. Students will develop high expertise based on intensive fieldwork. The structure, history and other characteristics of each society and culture are explored using ethnographic methodologies. Practical and theoretical problems in local areas are investigated. New approaches in anthropology and related disciplines are encouraged.



Ritual of Tibetan masked Buddhists (photo QIAO DAN JIABU)

Departments under the School

- Department of Regional Studies
- Department of Comparative Studies
- Department of Japanese Studies
- Department of Japanese History
- Department of Japanese Literature



■ Yamashita, Noriko
Dean
School of Cultural and Social Studies

Special field: Japanese early-modern literature, preforming arts, ukiyo-e



Seminar utilizing museum collections. Students have direct access to about 340,000 artifacts.

COURSES
Asian Studies
European Studies
African Studies
American Studies
Oceania Studies

For inquiries or information:

E-mail: souken@idc.minpaku.ac.jp

Department of Comparative Studies

The Department, affiliated with the National Museum of Ethnology, Japan, offers opportunities for comparative studies of social systems, religion, technology, languages, art, and cultural resources. Students are expected to explore similarities and differences in time and space and to explore new directions in the study of society and culture. The Department has the advantage of access to extensive collections of artifacts, audio-visual records, and documentary materials. The Department nurtures researchers who can develop new research areas by combining anthropological methods with the methods and findings of related fields.



Exhibition hall at the museum. A favorable educational environment for developing new research directions.



A Kazakh community event in Mongolia (Photo YAGI Fuki)
Our study abroad program provides access to diverse field places.

- COURSES**
- Social/Cultural Anthropology
 - Anthropology of Religion
 - Anthropology of Technology
 - Linguistics
 - Anthropology of Art
 - Cultural Resources

For inquiries or information:
E-mail: souken@idc.minpaku.ac.jp

Department of Japanese Studies

The Department of Japanese Studies is organized as a single administrative unit in order to facilitate the international and interdisciplinary pursuit of Japanese studies encompassing the humanities, social sciences, as well as natural sciences. A special feature of our graduate study program is that all the faculty participate in teaching and research guidance. The department requires graduate students to take three courses—"Theory and Methodology in Japanese Studies," "Interdisciplinary Research," and "Dissertation Writing Guidance"—which set forth the theoretical and methodological basis for conducting Japanese studies in global perspective. Through these courses and directed research, we hope to foster researchers with creative and highly specialized perspectives who are equipped to undertake comprehensive approaches of a broad interdisciplinary nature crossing the lines of multiple fields of study.



Library
We acquire basic books and periodicals published both in and outside of Japan.

- COURSES**
- Japanese Studies

For inquiries or information:
E-mail: senkou@nichibun.ac.jp

Department of Japanese History

In the Department of Japanese History, which has the National Museum of Japanese History as its parent institute, researchers specializing in history, archaeology, folklore, and allied disciplines including natural science, provide educational and research opportunities, including fieldwork, from interdisciplinary viewpoints. The most distinctive feature of the Department is that the students can use materials that are stored in the Museum, as well as various tangible and intangible information resources and advanced equipment for scientific analysis. The Department aims to foster researchers who are highly capable of comprehensive material-based analysis of Japanese history and culture and individuals who contribute to society with their broad and international perspectives.



Lecture utilizing museum collection
About 300,000 of historical, folkloric and archaeological artifacts as well as advanced research facilities can be made of.

COURSES

Japanese History

Studies of Historical Materials / Studies of Source Materials and Research on Exhibits / Analytical and Information Sciences / Social History / Technological and Environmental History / Regional Cultures
Basic Seminar I • II / Intensive Lectures A • B • C

For inquiries or information:

E-mail: soken@ml.rekihaku.ac.jp

Department of Japanese Literature

The Department of Japanese Literature is affiliated with the National Institute of Japanese Literature (NIJL) as the parent institute. The NIJL, one of the Inter-University Research Institutes, is an advanced research institute for Japanese literature and collects and studies an enormous volume of academic information based on research of original literary materials. The Department guides students to become independent researchers through dissertation/thesis guidance and, in the use of the collection of original texts and literary resources at the NIJL, provides students with an education focusing on mastering of specialized research and investigation techniques and the acquisition of comprehensive analytic ability.

The Department aims to nurture researchers who are international-minded with broad perspectives and contribute to societies by providing students with education through systematic curriculums under a system which provides guidance to students from a group of faculty members, as well as from individual faculty members.



Library

COURSES

Department of Japanese Literature

General subjects / Literary resource research / Research on the formation of literature / Research on literary environments

For inquiries or information:

E-mail: edu-ml1@nijl.ac.jp

School of Physical Sciences

Aiming to nurture world-class researchers with broad perspectives as well as individuals with advanced knowledge and skills who will contribute to society in the field of material-, space-, and energy-related physics and chemistry.

School of Physical Sciences

The School of Physical Sciences conducts education and research in physical sciences relating to material, space, energy, and life. The five departments that constitute the School have been located at four Inter-University Research Institutes: the Institute for Molecular Science, the National Astronomical Observatory of Japan, the National Institute for Fusion Science, and the Institute for Space and Astronautical Science. These Institutes house special and large equipment impossible for general universities to accommodate, and they have implemented a great number of large-scale and internationally advanced research projects. The School is open to many foreign researchers, including visiting faculty members, postdoctoral fellows, and students, and thus offers a highly international environment. In this excellent research environment, students experience the frontiers of physical science and devote themselves to study and research, striving to create the science of the future by themselves. The School provides a tutoring system in which at least two faculty members are assigned per student, allowing practical research with one-on-one guidance. In addition, a research assistant (RA) system has generously supported students financially and created an environment in which they can concentrate on their study and research. We hope that many motivated students will enroll in the School and grow into researchers who will play major roles in the future of physical science.

Department of Structural Molecular Science

Education and research are primarily concerned with a systematic unveiling of the static as well as dynamic properties of materials through real images of molecules and molecular assemblies deduced from detailed structural analyses. Advanced training and research are conducted in the field of structural molecular science with the use of new methods for detecting and analyzing dynamic structures, in addition to a variety of traditional spectroscopic and theoretical techniques for structural analysis.



Electronic states studied by photoelectron spectroscopy

Departments under the School

- Department of Structural Molecular Science
- Department of Functional Molecular Science
- Department of Astronomical Science
- Department of Fusion Science
- Department of Space and Astronautical Science



■ Uozumi, Yasuhiro
Dean
School of Physical Sciences
Special field: Organic Chemistry

COURSES

Electronic Structure Material Chemistry

For inquiries or information:
E-mail: r7139@orion.ac.jp

Department of Functional Molecular Science

Education and research are primarily directed towards, firstly, unveiling the underlying mechanisms of various functions of materials at the atomic or molecular level, and secondly, the design and generation of new functional properties of molecules and molecular assemblies. Advanced training and research are conducted in the field of functional molecular science with an emphasis on the development of modern techniques for functional analysis and novel theoretical approaches.



Synthesis of novel organic compounds
Chemistry of buckyball molecules sumanene

COURSES

Molecular Dynamics
Excited State Dynamics

For inquiries or information:
E-mail: r7139@orion.ac.jp

Department of Astronomical Science

The Department carries out advanced education and research through a wide range of observational and theoretical researches using state-of-the-art facilities like Subaru Telescope in Hawai'i, the ALMA radio telescope in Chile, and supercomputers. According to the interest, students can learn the observational and theoretical astronomies and application of cutting-edge technology as well as the design, fabrication, and testing of new observational instruments, development of new methods of data acquisition and analysis, and public outreach.



Subaru Telescope is located on the summit of Mauna Kea, a dormant volcano on the Big Island of Hawai'i.

COURSES

Optical and Near Infrared Astronomy

Ground-based astronomy / Optical and infrared telescope system / Planets / Sun, stars and interstellar matter / Galaxies and cosmology

Radio Astronomy

Ground-based astronomy / Radio telescope system / Sun, stars and interstellar matter / Galaxies

General Astronomy and Astrophysics

High-precision astronomical measurement / Astronomy from space / Data analysis and numerical simulation / Earth and planets / Sun, stars and interstellar matter / Galaxies and cosmology

For inquiries or information:
E-mail: daigakuin@nao.ac.jp

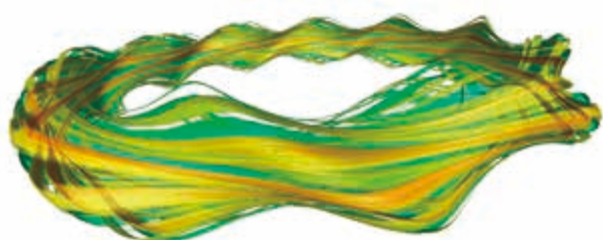
Department of Fusion Science

To develop fusion power for a future energy source, it is necessary to research plasma physics through a complementary approach of both experimental and theoretical studies.

In this department, students learn the experimental methodology as well as engineering requirements for investigating high temperature plasma, and also learn computer simulation techniques for revealing the nature of complicated fusion plasmas.



LHD Vacuum Vessel



First principle based turbulence simulations for LHD

COURSES

Fusion System

Device system / Research operation / Plasma heating / Diagnostics

Fusion Simulation

Plasma simulation / Particle simulation / Magneto hydrodynamic simulation

For inquiries or information:

E-mail: daigakuin@nifs.ac.jp

Department of Space and Astronautical Science

The Department of Space and Astronautical Science provides an opportunity for high-level education and advanced research through the theoretical study, the analysis of acquired data, and the practice of advanced R&D in Astrophysics, Solar System Sciences and Space Engineering. The main feature of each major is as follows.

- **Astrophysics** is to elucidate the origin, structure and evolution of the universe based on the observations from space.
- **Solar System Sciences** is to understand the origin and evolution of a variety of environments, including the prebiotic materials, by examining the present status and samples of past days.
- **Space Engineering** is to lead the future space development by providing innovative space technology. New space technology enables challenging missions in the above two scientific activities.

In addition, it is expected to cultivate not only depth of knowledge in Space Science but also the planning skills for space projects by touching on the most advanced and complex space projects.



Asteroid explorer "Hayabusa2"

The spacecraft is touching down to a newly created crater.

©Akihiro Ikeshita

COURSES

Space Exploration Science and Engineering

Space System / Space Exploration / Space Environment Science

Space Observation Science

Space Astronomy / Solar System Exploration

Space Technology

Electronic Device and telecommunication / Space Transportation Technology

For inquiries or information:

E-mail: sokendai@ml.jaxa.jp

School of High Energy Accelerator Science

The School of High Energy Accelerator Science provides opportunities for graduate students to carry out experimental and theoretical research on elementary particles and on materials structure and functions. The School also encourages them to engage in the research and development of novel and high performance accelerators. In addition, the School aims to foster the creative researchers who will push the frontiers of science and contribute to the good of society.

School of High Energy Accelerator Science

The School of High Energy Accelerator Science consists of three departments: the Department of Accelerator Science, the Department of Materials Structure Science, and the Department of Particle and Nuclear Physics. These departments are affiliated with the Accelerator Laboratory (and the Applied Research Laboratory), the Institute of Materials Structure Science, and the Institute of Particle and Nuclear Studies in the High Energy Accelerator Research Organization (KEK).

In the Department of Particle and Nuclear Physics, accelerator based high energy physics experiments through international collaborative projects as well as advanced theoretical research are performed in order to study and understand the origin of the cosmos and the ultimate structure of matter. In the Department of Materials Structure Science, structures of hard to soft materials and their functions are studied not only from a fundamental interest but also from an application point of view. KEK develops and operates high-energy accelerators which provide various particle beams such as protons, electrons, positrons, neutrinos, X-rays, neutrons, and muons. In the Department of Accelerator Science, principles and components of the accelerator complexes are studied. The education programs are based on variety of research activities pursued by KEK, which provide wide range of graduate education for students.

Department of Accelerator Science

High-energy particle accelerators are extremely powerful tools for exploring a wide range of building blocks and structures found in nature, from elementary particles and atomic nuclei to atoms, molecules, and even complex living organisms. In addition, beyond the field of natural science, applications of particle accelerators are being actively pursued in the fields of industry and medical science.

In the Department of Accelerator Science, students can conduct both theoretical and experimental research on the principles of accelerators and their related leading edge technologies, and thereby endeavor to further advance natural science through the development of particle accelerators. Closely related subjects, such as radiation science, computer science, superconductivity engineering, and mechanical engineering can also be studied.



Accelerator Test Facility

Departments under the School

- Department of Accelerator Science
- Department of Materials Structure Science
- Department of Particle and Nuclear Physics



■ Kamiyama, Takashi

Dean

School of High Energy Accelerator Science

Special field: Neutron Diffraction

COURSES Accelerator Science

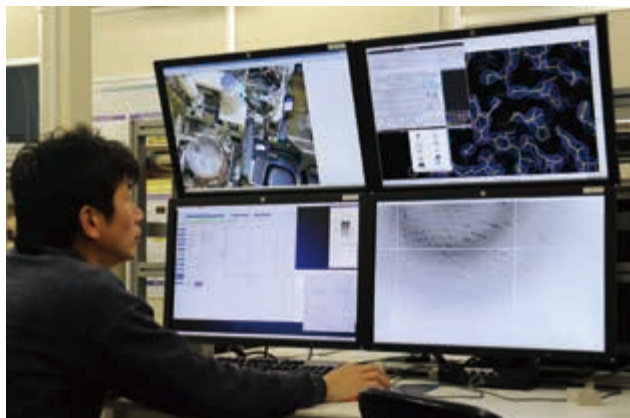
Beam physics / Beam Development / Design of Accelerator Projects / Accelerator Technology / Science of Magnetism / Science of Radio-Frequency Acceleration / Vacuum Science and Technologies / Computer Science / Radiation Science / Mechanical Engineering for Accelerator Development

For inquiries or information:

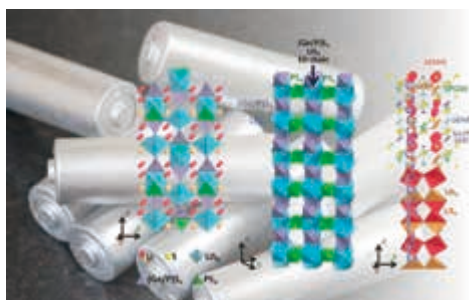
E-mail: kyodo2@mail.kek.jp

Department of Materials Structure Science

At the Institute of Materials Structure Science, we pursue leading edge researches on structures, functions and characteristics of hard to soft materials. The research studies concerning physics, chemistry, biology, engineering, agriculture, and medical science are performed by the use of advanced beams such as synchrotron radiation, neutrons, muons, and slow positron, which are provided by state-of-the-art particle accelerators. We are also developing novel technologies for beam production and its utilization to make major contributions to materials science.



View of a protein crystallography end-station



The crystal structure of the world-best lithium-ion-conducting material $\text{Li}_{10}\text{GeP}_2\text{S}_{12}$ was determined by neutron diffraction and synchrotron radiation. (Left to right) the crystal structure of $\text{Li}_{10}\text{GeP}_2\text{S}_{12}$, its framework, the conduction paths of lithium ions are shown. Zigzag conduction pathways along the c axis are indicated.

COURSES Materials Structure Science

Synchrotron Radiation Science /
Materials Structure
Science based on Synchrotron Radiation /
Neutron and Muon Science

For inquiries or information:

E-mail: kyodo2@mail.kek.jp

Department of Particle and Nuclear Physics

Both particle physics and nuclear physics are among the most fundamental areas of basic science, and they are the sources of new frontiers in physical concepts and methods that are the basis of modern science; these subjects involve the pursuit of the most fundamental principles of nature and the exploration of the basic structure and building blocks of matter.

In this department, we conduct both theoretical and experimental researches in particle and nuclear physics. The theoretical investigations include not only those in particle and nuclear physics but also those in cosmology and astrophysics. The experimental investigations are conducted by means of colliding beam accelerators and various beams from high-intensity proton accelerators. In addition, related research in physics, including the R&D of new devices, methods, and their applications, is pursued in a versatile manner.



Upgrade of the SuperKEKB accelerator and Belle II detector. ©KEK

COURSES Theoretical Particle and Nuclear Physics

Fundamental Theories of Particle Physics / Particle Physics Phenomenology / Lattice Gauge Theory / Hadron and Nuclear Theory / Theoretical Cosmophysics

COURSES Experimental Particle and Nuclear Physics

B Factory / Hadron Collider Energy Frontier / Lepton Collider Energy Frontier / Neutrino Physics / Kaon Rare Decay / Muon Rare Process / Muon Precision Measurement / Nuclear Physics / Physics of Short-Lived Nuclei / Neutron Fundamental Physics / Experimental Cosmophysics / Beam Dynamics / Superconductivity and Cryogenic Engineering / Particle Detection Technology

For inquiries or information:

E-mail: kyodo2@mail.kek.jp

School of Multidisciplinary Sciences

The School of Multidisciplinary Sciences conducts research and education on important issues relating to changes of the Earth, environment, and human society. The School strives to cultivate researchers and highly specialized professionals in the area of information and system sciences, who will play key roles in research and/or development skills that will contribute to solving these issues.

School of Multidisciplinary Sciences

The School of Multidisciplinary Science conducts research and education on complicated natural and social phenomena, as systems that govern the occurrences, functions, and interactions of these phenomena, from the comprehensive and transdisciplinary viewpoint. Through such research and educational activities, the School aims to nurture researchers and highly specialized professionals in the area of information and systems who will take the lead in academic research and address various important issues relating to changes in human society in the 21st Century. The School, consisting of the Department of Statistical Science, the Department of Polar Science, and the Department of Informatics, has been involved in multidisciplinary research fields from the beginning. In addition, the School further strives to enhance its research and education by promoting close collaboration between the Departments by, for example, setting common subjects in curricula.

The School covers diverse research subjects but studies the principles of multidisciplinary science, research approaches, and methodologies as an essential part of the School's research and education activities. The Department of Statistical Science and the Department of Informatics seek to determine the common probability or complexity among various phenomena by statistical mathematics and data analysis. The Department of Polar Science studies the geophysical and the biological complex system in the polar regions of extremes on Earth and approaches its subject from the viewpoint of multidisciplinary science. By continuing to explore new research fields, including advanced and leading research fields, and systematizing them through such activities, the School strives for further development of the multidisciplinary sciences.

Department of Statistical Science

Statistical science researches statistical models and methods for rational inference, effective prediction and discovery of new knowledge based on the effective use of data in the face of complex and uncertain phenomenon and information explosion.

The Department of Statistical Science, which is based on the Institute of Statistical Mathematics (ISM) serving as its underlying platform, aims to cultivate individuals who possess creative research skills to contribute to solving various important intricately-intertwined problems. To this end, the Department conducts education and research related to the basis, mathematics and applications of data collection designs, modeling, inference and prediction, and equip students with the ability to extract information and knowledge from the real world based on the effective use of data.



Visualization System

Departments under the School

- Department of Statistical Science
- Department of Polar Science
- Department of Informatics



■ Yoneda, Tomohiro
Dean
School of Multidisciplinary Sciences
Special field: Software Engineering

COURSES

Statistical Science

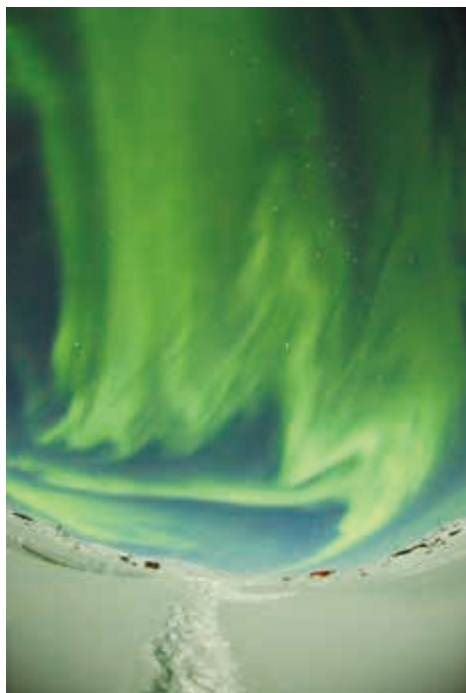
Statistical Modeling / Data Science / Mathematical Analysis and Statistical Inference

For inquiries or information:

E-mail: kenkyo@ism.ac.jp

Department of Polar Science

The Earth is the only one aqua-planet in the Solar system. Many kinds of organism including mankind have been living on it. When we long for sustainable development on this planet, we have to better understand evolution and change of its environments. Recently, we come to realize that environmental change of the Earth, in each aspect of ionosphere, atmosphere, hydrosphere, geosphere and biosphere, appears in advance from both polar regions. The objectives of Department of Polar Science are to study characteristics of the changes and their relation in the framework of the seamless Earth system. Polar Science stands strongly on the fieldwork; therefore we attach importance to educate or study together practical methodology to carry out the research. We train "Earth scientists" who are creative and flexible in studying the past, current and future figure of the Earth.



The aurora australis (Photo by Hidehiko Suzuki)

COURSES Polar Science

Polar Space and Upper Atmospheric Sciences / Polar Meteorology and Glaciology / Polar Geoscience / Polar Bioscience

For inquiries or information:

E-mail: kyokuiki@nipr.ac.jp

Department of Informatics

Informatics is a new science field which deals with many problems on information extensively and synthetically. It is a multidisciplinary science which covers traditional information science and engineering, as well as humanity informatics and social informatics. It includes expression, collection, circulation, management, processing and usage of information as well as the information technology (IT) for supporting them.

The Department of Informatics aims to foster researchers and highly skilled professionals with ability in broad range from foundations to practices and advanced speciality by utilizing cutting-edge research environment and cyber science infrastructure of the National Institute of Informatics in an international atmosphere with many researchers and students from various countries.



The Cooling Test for Submerging an In-water Computer and Fault-diagnosis Test Boards in Water.



Professor and students are sometimes developing an application or doing programming tasks jointly.

COURSES Informatics

Foundations of Informatics / Information Infrastructure Science / Software Science / Multimedia Information Science / Intelligent Systems Science / Information Environment Science

For inquiries or information:

E-mail: daigakuin@nii.ac.jp

School of Life Science

The School of Life Science aims to cultivate researchers who are internationally competitive and possess broad perspectives necessary for taking on leading roles in the life science research of the next generation. Students participate in research to clarify life phenomena at various levels from the molecular to the individual to the population.

School of Life Science

The School of Life Science aims to educate researchers who are internationally extraordinary and possess creativeness and broad perspectives to explore new fields of Life Science. Professors in this school cover wide fields of Life Science from the molecular to organismal and population levels.

The School of Life Science offers graduate programs that are aimed at nurturing independent and creative researchers that expand the frontiers of life science. Three departments that constitute the School of Life Science are based on three leading research institutions — National Institute of Genetics, National Institute for Basic Biology, and National Institute for Physiological Sciences. Research activities of these institutes cover variable fields of Life Science and the School of Life Science aims to provide research environments in which students can learn interdisciplinary concepts as well as their own specialty. Housing the largest number of life science faculty in Japan, the School of Life Science offers a mentoring system by multiple faculty, and provides a superb environment for independent research by each student. The graduate course provides not only lectures by outstanding internal professors but also seminars on the latest research progress conducted by external researchers, educational programs for cross-disciplinary approaches, and courses on scientific writing and presentation. The three departments hold a joint retreat every year for scientific interactions and share lectures over the internet for further enhanced interactions. We welcome students who love and enjoy Life Science, and dream to open new windows into the field.

Department of Genetics

The Department of Genetics offers education and research opportunities in a variety of cutting-edge disciplines with the goal of investigating biological phenomena on the basis of genetic information. Study and research fields include molecular, cellular, developmental, behavioral, population, and evolutionary genetics, as well as genome biology and bioinformatics. Students can take advantage of a wide range of databases and genetic resources hosted by the National Institute of Genetics. To nurture independent researchers, the Department of Genetics adopts an educational philosophy that the academic guidance of each individual student is carried out by the entire faculty. For example, graduate students meet with their thesis committee twice a year to receive advice from faculty members outside their host labs. Other features of the Department include the Scientific Presentation/Writing Program and ample financial assistance opportunities such as our research assistant program.



The rich environment of the Department of Genetics allows students to fully devote themselves to their own research projects.

Departments under the School

- Department of Genetics
- Department of Basic Biology
- Department of Physiological Sciences



■ Furuse, Mikio
Dean
School of Life Science
Special field: Cell Biology



Lively discussions are often held in the laboratories.

COURSES
Molecular and Cellular Biology
Developmental Biology
Evolutionary Biology
Genome Biology

For inquiries or information:
E-mail: info-soken@nig.ac.jp

Department of Basic Biology

The Department of Basic Biology trains researchers capable of developing innovative approaches and creative ideas to understand higher order phenomena in biological science. Students take advantage of the environment and facilities of the National Institute for Basic Biology. Students conduct a PhD research project with taking a variety of advanced classes and advices from several professors with different specialities. Research fields in this department cover cell biology, developmental biology, environmental biology, neurobiology, symbiotic biology and evolutionary biology with appropriate model organisms and top-end techniques including molecular biology, bioimaging, mathematical science and omics.



Model organisms used at Department of Basic Biology

COURSES

Cell Biology
Developmental Biology
Environmental Biology
Neurobiology
Evolution, Diversity and Genomic Biology
Reproductive Biology

For inquiries or information:
 E-mail: r7139@orion.ac.jp

Department of Physiological Sciences

Physiology is to clarify the mechanisms of living bodies from both elements (cells and molecules) and systems, and therefore provides important basic knowledge necessary for understanding pathological conditions. Importance of physiology has been much increased upon clarification of genome structures. In this department, students can learn the function of intact organisms in an integrated way from molecular / cellular levels as basic units of living organisms to whole body levels, and are expected to be pioneering researchers in bioscience, neuroscience and medicine.



Cells, tissues and organs which researchers in Department of Physiological Sciences are working on using different experimental procedures

COURSES

Molecular and Cellular Physiology
Homeostatic Regulation
Fundamental Neuroscience
System Neuroscience

For inquiries or information:
 E-mail: r7139@orion.ac.jp

School of Advanced Sciences

Based on SOKENDAI's founding principles and purposes, the School aims to accomplish world-class academic research beyond the borders of conventional academic fields through interdisciplinary approaches. Additionally, we strive to develop transdisciplinary and advanced academic fields and to produce researchers who have broad perspectives and a high level of expertise that is globally competitive.

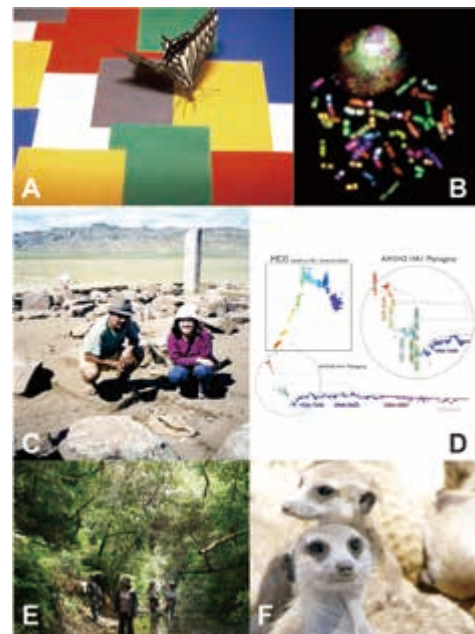
School of Advanced Sciences

The School of Advanced Sciences is a school with just one department: the Department of Evolutionary Studies of Biosystems. Our mission is to perform research and education in the fields of evolution and science and society. The evolution section focuses on the diversity and evolutionary history of organisms, and consists of four subsections: integrative anthropology, behavioral biology, evolutionary biology and theoretical biology. The science and society section studies the roles and responsibilities of scientists within society, from the viewpoint that science is a social activity of humans. Students carry out Ph.D. research in their own field, but are also required to write a subthesis in the other one: biology students write a subthesis on science and society, and vice versa. The barriers between laboratories have been removed as far as possible, which makes for an intense, intimate educational environment for all students and faculty. We thus hope that all of our students will become competent and well-balanced researchers / professionals.

We also actively promote international and domestic collaborations with other universities and research institutes, to plant the seeds for fruitful future research fields.

Department of Evolutionary Studies of Biosystems

Since the origin of life 3.8 billion years ago, an extremely diverse collection of living organisms has populated the Earth. The concept of evolution is key to understanding the history and diversity of life, and also provides a theoretical framework linking the various levels of biology. Even human society can be viewed through the lens of evolution. Students will be trained to be world-class scientists in their own research field. At the same time, we offer courses covering not only a wide range of biological topics but also the relationship between science and society. This comprehensive training program aims to broaden our students' perspectives, in order that they will become professionals able to contribute to developing a sustainable global society in the future.



- A. A swallowtail butterfly feeding on nectar on the Mondrian pattern
- B. Chromosome images with the multicolor fluorescence *in situ* hybridization (FISH) method (crab-eating monkey ; $2n = 42$)
- C. Bones of horses excavated in Mongolian remains
- D. Forecasting evolution of influenza virus by using a mathematical mode
- E. Field exercise at Morito River
- F. Meerkats form a family group and demonstrate various cooperative behaviors among related individuals.

Departments under the School

- Department of Evolutionary Studies of Biosystems



■ Sasaki, Akira
Dean
School of Advanced Sciences

Special field: Mathematical
Biology

COURSES

Major in Biology

Anthropology / Evolutionary Biology / Behavioral Biology / Advanced Theoretical Biology

Major in Science and Society

Social Studies of Science

For inquiries or information:

E-mail: office_sendou@ml.soken.ac.jp

Educational Programs

SOKENDAI Freshman Course

The Freshman Course is an intensive course (4 days camp) for newly-enrolled students of SOKENDAI. This course has two objectives: (1) To acquire basic knowledge and skills required for all researchers; and, (2) To understand the SOKENDAI's broad range of intellectual fields, and create a network beyond your research field. This course consists of four sections: "Frontiers of Knowledge," "Student Seminar," "Researchers and Society," and "Communication Skills for Researchers."



■ 2017 (First semester)

Date: April 11-14, 2017

Venues: SOKENDAI Hayama Campus

Participants: 63 students, 35 faculty members, Total 98

■ 2017 (Second semester)

Date: October 10-13, 2017

Venues: SOKENDAI Hayama Campus

Participants: 47 students, 32 faculty members, Total 79

"Science and Society" Program

SOKENDAI has been leading a program to develop graduate education in "science and society." Since the university's primary mission is to train professionals who have leading expertise as well as broader perspectives, we hope our young scientists develop abilities to grasp science as part of social activities and to think critically about social dimensions of scientific practice including social implications and impacts of research activities and infrastructure supporting scientific research. Therefore the program designs and provides "science and society" course as well as workshops to discuss various issues pertinent to a specialized field of science. As part of the activities, we offer a 1.5-day program, "Researchers and Society," within the Freshman Course twice a year (in Japanese and English).

SOKENDAI Brain Science Joint Program

Brain Science Joint Program was set up as a model case of the interdisciplinary education system initiated by Dept. Physiological Sciences and created a new curriculum for SOKENDAI students to learn extensive fields in Brain Science with the cooperation of other related Departments (Basic Biology, Genetics, Informatics, Statistical Science, Evolutionary Studies of Biosystems).

All lectures are being delivered by remote lecture system, which enables students to attend from the distant departments. We cordially expect your active participation from various backgrounds.

Integrative Bioscience Education Program

To foster the development of young researchers who can contribute to the future of biology, we need a new graduate program that promotes interdisciplinary and integrative views of biological processes, covering not only biological but also physical, mathematical, and information sciences. A new curriculum of Integrative Bioscience will thus be developed and implemented in this program, utilizing notable features of SOKENDAI: graduate school education at cutting-edge national research institutes in diverse fields.

Historical and Cultural Resource Management Program

The historical and cultural resource management course is led by the School of Cultural and Social Studies and aims to develop researchers with a high capability in historical and cultural resource management through learning about advanced historical and cultural resource management such as methods for reading diverse historical and cultural resources, analysis using advanced scientific methods, recording and scientific preservation management of historical and cultural resource information, and research presentations using historical and cultural resources.

Course-by-Course Education Program to Cultivate Researchers in Physical Science with Broad Perspectives

The Program is provided jointly by the School of Physical Sciences and the School of High Energy Accelerator Science. It seeks to foster researchers in the field of physical sciences who are fully equipped with a high degree of professional qualities as well as broad perspective and international competence to meet the needs of society. In the 1st to 2nd years of the 5-year doctoral course, the Program focuses on building basic academic skills at the graduate school level. In the 3rd to 5th years of the 5-year doctoral course students are placed according to their aptitude into one of the following four courses: Basic Course*, Advanced Research Course, Project Research Course (available only in the School of Physical Sciences), and Development Research Course (available only in the School of Physical Sciences).

*For students matriculating in AY2018 or later, course completion in the "Basic Course" has been discontinued.

Joint School Seminars

◇ SOKENDAI Cultural Forum / School of Cultural and Social Studies

December 2-3, 2017 at National Museum of Japanese History

The forum is an event for academic exchanges organized by SOKENDAI's only liberal arts department, School of Cultural and Social Studies. Centering "culture" as a common focus, it offers a forum for interdisciplinary exchanges among faculties and students of various majors from inside and outside of the university.

As it provides a place to publish their research, the event functions as an educational opportunity for the students to present their research works and achievements and to learn presentation skills at the same time. Through these activities, the project also serves as a gateway for academic interactions between art and science students.

Furthermore, by involving students in the planning and organization of the event, students can exercise their planning skills and receive advices and supports from faculties on project management through the collaboration, which in turn would facilitate students' ability as independent researchers.



◇ Multidisciplinary Sciences Cross Talks / School of Multidisciplinary Sciences and School of Life Science (Department of Genetics)

September 21-22, 2017 at Nagano Prefecture

At the "Young Researchers Cross Talks" hosted by Research Organization of Information and Systems and co-sponsored by School of Multidisciplinary Sciences, members of School of Multidisciplinary Sciences and Department of Genetics, as well as faculties and students from a variety of fields in SOKENDAI, join together to hold group discussions throughout this overnight event.

Through group discussions and presentations on multidisciplinary topics with the presence of local and international faculties and students from various fields of study, students are expected to acquire higher expertise, wider perspectives, and international competency.

◇ Life Science Retreat / School of Life Science & School of Advanced Sciences

October 23-24, 2017 at Yamanashi Prefecture

Life Science Retreat invites biology faculties and students for academic interactions, through which it aims to foster talents with a broader grasp of biological science and the capacity to contribute to the development of the field.

English is used throughout the conference to improve the participants' international caliber. Students plan and coordinate research presentations (oral and poster) and opinion exchanges. In the project, student organizers are expected to polish planning skills through the preparation and exercise presentations skills.



SOKENDAI Short-term Research Abroad & Long-term Internship Program

This program encourages SOKENDAI students to seek a short-term research opportunity abroad and/or a long-term collaborative research project in and outside Japan that may lead to their career in the future. The program follows the educational goals of SOKENDAI, “advanced specialties and expertise,” “broad perspective,” and “international competitiveness,” and intends to financially support such research opportunities of SOKENDAI students. (The “short-term abroad program” and “internship program” (both undertaken until 2017) have been merged into this new program.)

2017

Short-term Abroad Program

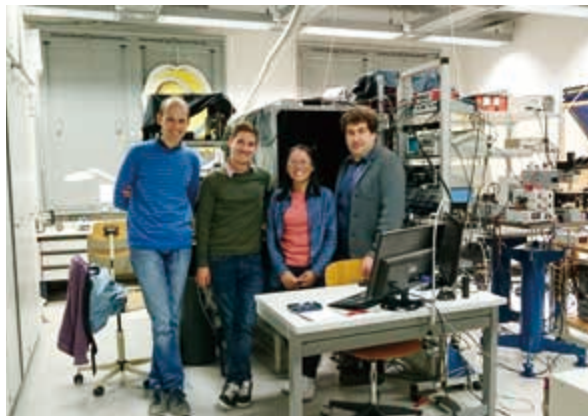
Number of students supported: 11

Dispatched countries: USA, UK, Italy, Austria, Slovenia, Germany, China

Internship Program

Number of students supported: 8

Dispatched countries: USA, Switzerland, Sweden, Czech Republic, Germany, Peru, Malaysia



Theme Lectures

Theme Lectures are a group of intensive courses dealing with advanced and interdisciplinary themes, that would encourage students to broaden their perspective. Inspired by the diverse range of affiliated Inter-University Research Institutes, students are expected to gain the research skills that can address and tackle challenging issues of this rapidly-changing society.

Publication Support for Students

The publishing cost support of the printing expenses up to 200,000 yen per publication is carried out for about the academic paper which was a result of the research activities. This support is applicable only for the students who belong to SOKENDAI. Total 25 publications were supported in 2017.

Society and Community Outreach Activities

Press Release

Research findings in 2017 published on the following 8 papers are press released and subsequently appeared in newspapers and various media:

- ◇ Optical observations of the Phoenicid meteor shower in 2014 and activity of comet 289P/Blanpain in the early 20th century
- ◇ Inclined zenith aurora over Kyoto on 17 September 1770: Graphical evidence of extreme magnetic storm
- ◇ An asymmetric attraction model for the diversity and robustness of cell arrangement in nematodes.
- ◇ Analysis of "Hachioji meteorite" for the first time in detail
- ◇ Physcomitrella MADS-box genes regulate water supply and sperm movement for fertilization
- ◇ Redirected aggression as a conflict management tactic in the social cichlid fish *Julidochromis regani*.
- ◇ 'The Industry Must Be Inconspicuous': Japan Tobacco's Corruption of Science and Health Policy via the Smoking Research Foundation
- ◇ Discover iron meteorite at Nagara, Gifu city Named "Nagara meteorite"

Community Programs

With the aims of making the accumulated research findings of the University broadly available to the public, opening up the University to the public, and deepening exchanges with the local community, we proudly participate in the "Shonan Village Festival" in Shonan Village, which is home to the Hayama Campus.

◇ Shonan Village Festival

-Lecture: "Human growth and child care from an evolutionary perspective"
Hasegawa, Mariko (President)
Date: May 3, 2017



◇ Science Seminar for Junior High and High School Students

-The Origin of new species
Terai, Yohey (Assistant Professor, Department of Evolutionary Studies of Biosystems)
Date: July 25, 2017

◇ "Yokoko Academia" organized by Kanagawa Prefectural Yokosuka High School

We supported the academic program, "Yokoko Academia" organized by Kanagawa Prefectural Yokosuka High School to contribute to local educational institutes and foster future generations. Last year, we sent our seven lecturers to the "Academia" at 5 seminars. The school was designated as a Super Science High School by the Ministry of Education, Culture, Sports, Science and Technology.

Academic Lectures hosted by the School of Advanced Sciences

From various on-going studies, the School selects themes relating to "light and evolution" and organizes academic lectures that deliver findings from cutting edge research to the general public and help to create deeper communication with people in the local communities.

■ The 20th Academic lecture for 2017

Lectures: Can science tell us about the unobservable part of the world?
Onishi, Yukinori (Assistant Professor at the Department of Evolutionary Studies of Biosystems)
Lectures: Where Do You Want to Live in Cuba? ~Diversity and Habitat Selection in Cuban *Anolis* Lizards~
Akashi, Hiroshi (Research Fellowship in School of Advanced Sciences)
Date: November 3, 2017



For inquiries or information : ESB Administrative Section

TEL : 81-46-858-1577, 1595 FAX : 81-46-858-1544 E-mail : office_sendou@ml.soken.ac.jp

SOKENDAI Newsletter

SOKENDAI Newsletter covers ongoing activity information at the university such as various events in our campuses, research findings released to media, and awards.

You can find it online on our university website. (Japanese Only)

<https://www.soken.ac.jp/disclosure/pr/publicity/newsletter/>



JSPS Summer Program

The objective of this program is to inject an international element into the education at the University and to promote academic exchange with other countries. SOKENDAI provides an orientation session during the first week of the program at the Hayama campus. It comprises Japanese language lessons, special lectures on Japanese culture and research, and a poster session in which SOKENDAI students will also participate to exchange ideas and opinions with JSPS Summer Program fellows from all over the world. Under the program young pre- and post-doctoral researchers from academically-advanced countries are invited to the University with the collaboration of inter-university research institutes and other universities. This program, which is supported by JSPS, provides guest researchers with an opportunity to experience Japanese research and education.

■ Opening Ceremony and Orientation

Date: June 14-20, 2017
Venues: Shonan Village Center

■ Research Report Presentation and Farewell Party

Date: August 22, 2017
Venues: Hotel Grand Palace (Tokyo)

■ Research Experience at Host Institutions

Date: June 21-August 21, 2017
Venues: IURIs, Universities

Invited researchers for the 2012		Invited researchers for the 2013		Invited researchers for the 2014		Invited researchers for the 2015		Invited researchers for the 2016		Invited researchers for the 2017	
U S A	64	U S A	65	U S A	66	U S A	65	U S A	65	U S A	55
U K	12	U K	17	U K	13	U K	10	U K	10	U K	13
France	10	France	9	France	13	France	13	France	13	France	13
Germany	14	Germany	19	Germany	13	Germany	12	Germany	12	Germany	13
Canada	9	Canada	3	Canada	0	Canada	10	Canada	10	Canada	13
				Sweden	10	Sweden	5	Sweden	5	Sweden	8
T o t a l	109	T o t a l	113	T o t a l	115	T o t a l	115	T o t a l	115	T o t a l	115



English Presentation Skills

Lectures for the purpose of obtaining practical abilities to internationally appeal attractiveness of research are held targeting the students of this university in conjunction with the orientation of the JSPS Summer Program. Students participate in a group discussion and a poster session held in the orientation, and practice the introduction of their research in English, after receiving guidance from English teachers.

The Center for Educational Development (CED)

“Advanced specialties and expertise,” “Broad perspective,” and “International competitiveness” are the educational goals of SOKENDAI, and they are the essential competencies for excellent researchers. In order to achieve these goals, we believe that the university-wide education that enhances the quality as an excellent researcher is necessary, in addition to specialized education carried out in each department. The missions of the CED are: to implement and support the university-wide education programs and projects; and, to assist in evaluation and analysis of the educational activities. We contribute to develop researchers rooted in our philosophy.



Member of the CED

Implement and provide support for the university-wide education program and projects

- Plan and implement “Freshman Course”
- Plan and implement “SOKENDAI Students’ Seminar on Skills for Poster Presentation”
- Design and provide support in improving the system of the university-wide education
- Provide support in implementing “SOKENDAI Short-term Research Abroad and Long-term Internship Program”
- Design and provide support in developing the international joint/double degree programs

Assist in evaluation and analysis of educational activities

- Conduct surveys and analyze the implementation status of the university-wide and specialized education in each department
- Conduct surveys and analyze students’ research activities
- Assist in analysis and evaluation in preparation for the Certified Evaluation and Accreditation
- Assist in analysis and evaluation in preparation for the MEXT’s National University Corporation Evaluation

Future Planning Division

In order to support management of the University by the leadership of the President, Future Planning Division was established as the core functions which carries out planning and proposals relating to education/research activities and organizational management of the entire University. We will start IR activities and collecting information to support formulating the future vision toward the period for the 4th Mid-term Objectives as the “SOKENDAI Future Vision Project”.

- Planning and proposals relating to management of the University
- IR activities to support planning, proposals and decision making
- International cooperation activities relating to the entire University
- Public relation activities relating to the entire University
- Formulation of the policies relating to management and operations of the headquarters of the University



The Center for Academic Information Services

This Center was established to aims at effective management of academic information in SOKENDAI. Based on secure and resilient information infrastructure, it provides various academic information services to researchers and researchers-in-future who are both users and creators of academic information, and supports education, research, and administration in SOKENDAI.

Hayama Library (Attached Headquarters)

Hayama Library gathers, organizes and releases various academic materials to provide high-level research and education and to pioneer advanced academic fields.

Hayama Library is open around-the-clock to the faculty and students at the Hayama Campus for reading and borrowing. It collects and makes available standard references and books that can be used in all Departments and Schools, as well as specialized books and journals related to studies in cutting-edge and/or interdisciplinary research fields.

Image and video documentation materials are available through in-house facilities.

In addition, Hayama Library offers SOKENDAI Institutional Repository, which allows free online access to doctoral dissertations and book/journal publications at the University, as well as academic papers published by the faculty and students at the Hayama Campus. The Library also provides database services, including OPAC (Online Public Access Catalog) for books and journals held by the Library, the HRMS (High-Resolution Molecular Spectroscopy Database), a database of SOKENDAI faculty's education and research outcomes, the Sakyo Komatsu Corpus, the Jomon Shellmound Database, and the Fowl Collection.

These books and database are also available to general public. The venue effectively functions both as a place to collect research resources and a studying space.

SOKENDAI staffs and neighborhood residents can borrow books belonging to Kanagawa Prefectural Library (KL-NET Service). Furthermore, since 2015, it has been serving as a service counter of National Diet Library to enable users to browse digital materials belonging to the National Diet Library.

Number of academic materials available at the Library

Book :	(Japanese)	approx. 22,600 titles
	(Non-Japanese)	approx. 24,800 titles
Journal :	(Japanese)	approx. 150 titles
	(Non-Japanese)	approx. 330 titles
E-book :		approx. 85,000 titles
E-journal :		approx. 5,900 titles
Institutional Repository :		approx. 4,700 titles

As of April 1, 2018

Electronic Journals

BioOne / JSTOR / Science Direct / Springer-LINK / Wiley-Blackwell / GeoScienceWorld

Scopus (Document/reference database search service)

※In addition to the above, electronic journals for internal use at the Hayama Campus are available.

<http://www.lib.soken.ac.jp>

Database for Sakyo Komatsu Corpus

Database for the bibliography of Sakyo Komatsu's works.

Database for the Jomon Shellmound

Database for the sites from which the faunal sediments are excavated.

Database for the Fowl Collection

Database for the folk crafts etc of which the motif are the Fowls.

University Library

The University Library consists of the Hayama Library and IURI libraries. The University Library gathers, organizes, and accumulates electronic materials. Under close cooperation with the Hayama Library and IURI libraries, the University Library aims to promote the education / research activities by performing required activities for facilitation of the use of academic information. It offers a large number of e-journals and e-books so that faculty and students of IURIs dotted around the country can use these materials in common. In addition, the university introduces and offers the world's largest bibliographic / citation database "Scopus".

For inquiries or information :

University Library

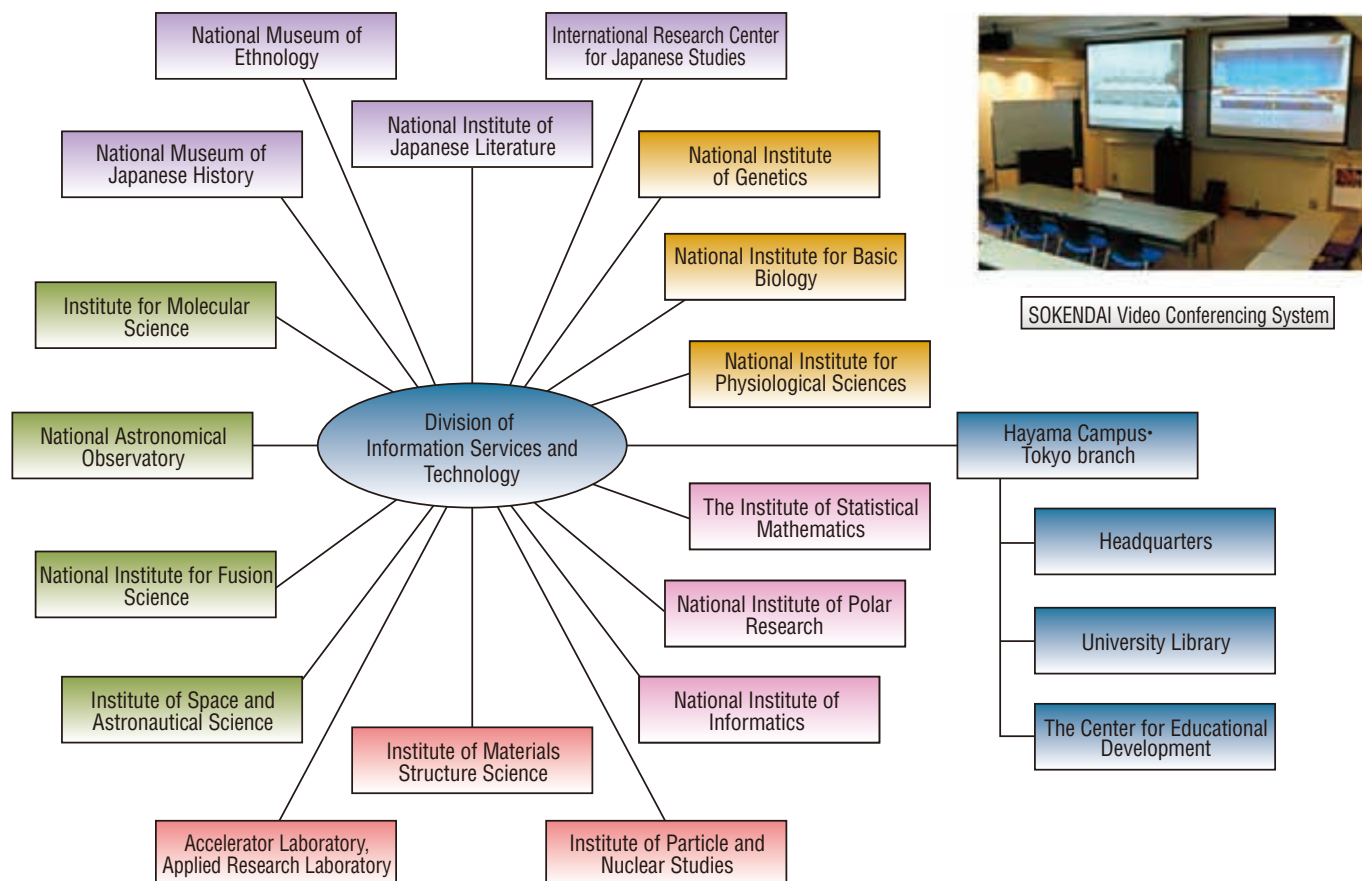
TEL : 81-46-858-1528

FAX : 81-46-858-1607

E-mail : lib@ml.soken.ac.jp

Division of Information Services and Technology

Cooperating with the affiliated research institutes and museums, this division manages core information facilities and operates information systems located at the Hayama Campus and its branch.



SOKENDAI Video Conferencing System

The system connects the affiliated Inter-University Research Institutes and JAXA with the university headquarters. It facilitates teleconferencing and supports university activities.

Tele-learning Assistant System at SOKENDAI

The system promotes inter-departmental activities and supports education and research with broad and deep perspectives.

SOKENDAI Cloud Computing System

This private cloud computing system is a basic facility lately developed to promote intra-university education, academic exchange, and public relations.

For inquiries or information : Academic Information Service Office

TEL : 81-46-858-1587
 FAX : 81-46-858-1633
 E-mail : istc.jimu@ml.soken.ac.jp

Recipients of Award

Our Nobel Prize Laureates

Professor Emeritus, School of Life Science



The 2016 Nobel Prize in Physiology or Medicine for his discoveries of mechanisms for autophagy

1996.10-2009.3 Professor, School of Life Science

2008.4-2009.3 Dean, School of Life Science
2006 Japan Academy Prize
2016 Order of Culture

Yoshinori Ohsumi
Professor Emeritus,
SOKENDAI /
National Institute for
Basic Biology

Professor Emeritus, School of High Energy Accelerator Science



The 2008 Nobel Prize in Physics for the discovery of the origin of the broken symmetry which predicts the existence of at least three families of quarks in nature

1999.4-2004.3 Professor, School of Mathematical and Physical Science
2004.4-2006.3 Professor, School of High Energy Accelerator Science

2003.4-2004.4 Chair, Department of Particle and Nuclear Physics
2008 Order of Culture

Makoto Kobayashi
Professor Emeritus,
SOKENDAI /
Honorary Professor
Emeritus, High Energy
Accelerator Research
Organization(KEK)

The list of professors who received famous prizes or held an honorable positions in international academic society

Name	Prize/Achievement	Research Theme
Ohta, Tomoko (Professor Emeritus, Department of Genetics)	Order of Culture (2016) The Crafoord Prize (2015)	Nearly Neutral Theory
Suematsu, Yasuharu (Professor Emeritus, Department of Informatics)	Order of Culture (2015)	Optical Communication Engineering
Innan, Hideki (Associate Professor, Department of Evolutionary Studies of Biosystems)	Japan Academy Medal (2014)	Theoretical Elucidation of the Mechanisms of Evolution with Genomic Sequence Data
Nakanishi, Susumu (Professor Emeritus, Department of Japanese Studies)	Order of Culture (2013)	Japanese Literature
Iye, Masanori (Professor Emeritus, Department of Astronomical Science)	Japan Academy Prize (2013)	Observational Studies of the Early Universe
Yamanaka, Yuriko (Associate Professor, Department of Regional Studies)	Japan Academy Medal (2011)	A Comparative Study of Alexander the Great's Images in the Medieval Middle East
Hayami, Akira (Professor Emeritus, Department of Japanese Studies)	Order of Culture (2009)	Socio-Economic History, Historical Demography
Morokuma, Keiji (Professor Emeritus, Department of Structural Molecular Science)	Imperial Prize and Japan Academy Prize (2008)	Theoretical Studies of Design of Structure, Function and Reactivity of Molecules
Kaifu, Norio (Professor Emeritus, Department of Astronomical Science)	President, International Astronomical Union (2012-2015)	
Motojima, Osamu (Professor Emeritus, Department of Fusion Science)	Emeritus Director-General of ITER International Fusion Energy Organization (2010)	

The list of alumni who received JSPS Ikushi Prize

Name	Prize	Research Theme
Kariyazono, Shiho (Department of Evolutionary Studies of Biosystems)	JSPS Ikushi Prize (2017)	The genetic basis and the biological role of fluorescent proteins in Acropora species
Kitamura, Daichi (Department of Informatics)	JSPS Ikushi Prize (2016)	Multichannel blind music source separation based on nonnegative matrix factor source model
Mochizuki, Kenji (Department of Functional Molecular Science)	JSPS Ikushi Prize (2013)	Theoretical Study on the Molecular Mechanism of Ice Melting and the Local Structure of Aqueous Solution
Nakahata, Yoshihisa (Department of Physiological Sciences)	JSPS Ikushi Prize (2013)	Activation-Dependent Spatial Dynamics of Postsynaptic Glycine Receptors

Nagakura Research Incentive Award

Funded by SOKENDAI's first President, Dr. Nagakura Saburo, the SOKENDAI Nagakura Research Incentive Award started in 1995 to encourage SOKENDAI's outstanding students to pursue further research and to develop new research fields.

The 22th (2016) Award Ceremony: September 28, 2017

Name	Department	Research Theme
Kitamura, Daichi	Informatics	Effective Optimization Algorithms for Blind and Supervised Music Source Separation with Nonnegative Matrix Factorization
Matsuda, Takashi	Basic Biology	Distinct neural mechanisms for the control of thirst and salt appetite in the subfornical organ

Academic Staff

(As of May 1, 2018)

Category		Member of the Board	Professor	Associate Professor	Lecture	Assistant Professor	Others	Secretariat	Total
President		1							1
Executive Director		3							3
Auditor		2							2
Vice President		(1)							(1)
School of Cultural and Social Studies	Regional Studies		10	11					21
	Comparative Studies		11	12					23
	Japanese Studies		19	4					23
	Japanese History		18	14					32
	Japanese Literature		9	11					20
Subtotal		0	67	52	0	0	0	0	119
School of Physical Sciences	Structural Molecular Science		7	7		17			31
	Functional Molecular Science		9	6		21			36
	Astronomical Science		23	37		47			107
	Fusion Science		20	17		16			53
	Space and Astronautical Science		18	41		19			78
Subtotal		0	77	108	0	120	0	0	305
School of High Energy Accelerator Science	Accelerator Science		56	57	18	52			183
	Materials Structure Science		18	25	6	19			68
	Particle and Nuclear Physics		34	30	33	16			113
	Subtotal		0	108	112	57	87	0	0
School of Multidisciplinary Sciences	Statistical Science		20	18		9			47
	Polar Science		11	25		19			55
	Informatics		27	31		13			71
	Subtotal		0	58	74	0	41	0	0
School of Life Science	Genetics		24	10		29			63
	Basic Biology		15	16		34			65
	Physiological Sciences		14(1)	16		36			66(1)
	Subtotal		0	53(1)	42	0	99	0	0
School of Advanced Sciences	Evolutionary Studies of Biosystems		3(1)	6	4	6	3		22(1)
	Subtotal		0	3(1)	6	4	6	3	0
The Center for Educational Development		(1)		1	1	3			5(1)
The Center for Academic Information Services		(1)		(1)	1				1(2)
Future Planning Division		(1)		1	1				2(1)
Secretariat etc.								41	41
Total		6(4)	366(2)	396(1)	64	356	3	41	1232(7)

※ The number of staff in parentheses indicates those who concurrently work in other section [not included in the total].

Students

(As of May 1, 2018)

School	Department	Quota		1st year		2nd year		3rd year		4th year		5th year		Total							
		Doctoral Course		Female	Int'l Students	Female	Int'l Students	Female	Int'l Students	Female	Int'l Students	Female	Int'l Students	Female	Int'l Students						
		5-year	3-year																		
School of Cultural and Social Studies	Regional Studies		3					6	3	3	1	2	7	4	4	16	8	9			
	Comparative Studies		3					1	0	1	1	0	1	13	8	5	15	8	7		
	Japanese Studies		3					4	3	2	3	2	2	13	10	3	20	15	7		
	Japanese History		3					2	1	0	2	0	0	6	2	0	10	3	0		
	Japanese Literature		3					0	0	0	2	0	0	3	3	0	5	3	0		
	Subtotal			15					13	7	6	11	3	5	42	27	12	66	37	23	
School of Physical Sciences	Structural Molecular Science	2	3	9	4	1	4	1	0	5	1	1	1	0	7	0	2	26	7	4	
	Functional Molecular Science	2	3	4	0	0	6	3	1	3	0	2	5	0	2	1	1	19	4	6	
	Astronomical Science	2	3	2	0	1	4	0	0	7	2	2	7	3	1	4	0	0	24	5	4
	Fusion Science	2	3	2	1	1	1	0	0	3	0	0	5	1	3	4	0	2	15	2	6
	Space and Astronautical Science	2	3	2	1	0	3	1	1	6	0	2	4	0	0	9	2	1	24	4	4
Subtotal		10	15	19	6	3	18	5	2	24	3	7	22	5	6	25	3	6	108	22	24
School of High Energy Accelerator Science	Accelerator Science	2	※ ²	3	0	2	2	0	1	4	0	3	8	1	4	5	2	2	22	3	12
	Materials Structure Science	3	※ ²	2	1	1	3	2	1	4	1	1	0	0	0	4	1	2	13	5	5
	Particle and Nuclear Physics	4	※ ²	5	0	1	5	0	0	10	1	1	11	1	1	9	2	2	40	4	5
	Subtotal		9	—	10	1	4	10	2	2	18	2	5	19	2	5	18	5	6	75	12
School of Multidisciplinary Sciences	Statistical Science	2	3	2	0	0	2	0	0	5	2	0	5	1	2	11	3	0	25	6	2
	Polar Science	2	1	2	2	0	3	1	0	1	0	0	4	1	0	7	3	0	17	7	0
	Informatics	4	6	19	3	12	7	2	4	21	4	12	16	0	9	26	4	14	89	13	51
	Subtotal		8	10	23	5	12	12	3	4	27	6	12	25	2	11	44	10	14	131	26
School of Life Science	Genetics	3	6	6	4	4	8	5	3	4	3	2	5	1	1	6	2	1	29	15	11
	Basic Biology	3	6	4	1	1	4	1	1	7	1	1	6	0	1	15	7	3	36	10	7
	Physiological Sciences	3	6	2	1	1	3	0	0	5	2	2	4	4	4	12	2	1	26	9	8
	Subtotal		9	18	12	6	6	15	6	4	16	6	5	15	5	6	33	11	5	91	34
School of Advanced Sciences	Evolutionary Studies of Biosystems	5	1	2	1	0	1	1	0	3	0	0	4	2	0	10	9	3	20	13	3
	Subtotal		5	1	2	1	0	1	1	0	3	0	0	4	2	0	10	9	3	20	13
Total		41	59	66	19	25	56	17	12	101	24	35	96	19	33	172	65	46	491	144	151

※¹ The number of female students and international students is included in the total.

※² The School of High Energy Accelerator Science does not have a specific quota of admission but gives examinations.

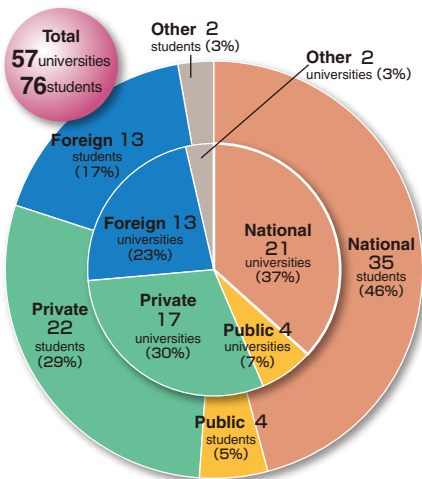
Matriculation Admission of the 2018

(As of April 1, 2018)

School	Department	Quota	Applicant	Passer	Admitted Students	Background			
						Gender		International Students	Jobholder
						Male	Female		
School of Cultural and Social Studies	Regional Studies	— (3)	(10)	(6)	(6)	(3)	(3)	(3)	(1)
	Comparative Studies	— (3)	(10)	(2)	(1)	(1)		(1)	
	Japanese Studies	— (3)	(12)	(5)	(4)	(1)	(3)	(2)	
	Japanese History	— (3)	(7)	(3)	(2)	(1)	(1)		
	Japanese Literature	— (3)	(1)						
	Subtotal	— (15)	(40)	(16)	(13)	(6)	(7)	(6)	(1)
School of Physical Sciences	Structural Molecular Science	2 (3)	10 (1)	9 (1)	9 (1)	5 (1)	4	1	
	Functional Molecular Science	2 (3)	7	4	4	4			
	Astronomical Science	2 (3)	22 (3)	8 (1)	1	1			
	Fusion Science	2 (3)	7	4	1	1			
	Space and Astronautical Science	2 (3)	2 (2)	2	2	1	1		
	Subtotal	10 (15)	48 (6)	27 (2)	17 (1)	12 (1)	5	1	
School of High Energy Accelerator Science	Accelerator Science	2 (※)	2	1	1	1			
	Materials Structure Science	3 (※)	2 (3)	2 (2)	1 (2)	(2)	1		(1)
	Particle and Nuclear Physics	4 (※)	23 (1)	10 (1)	4 (1)	4 (1)			
	Subtotal	9	27 (4)	13 (3)	6 (3)	5 (3)	1		(1)
School of Multidisciplinary Sciences	Statistical Science	2 (3)	5 (6)	1 (4)	1 (4)	1 (3)	(1)		(3)
	Polar Science	2 (1)	3	2	2		2		
	Informatics	4 (6)	14 (5)	9 (5)	9 (5)	9 (5)		3 (1)	1 (2)
	Subtotal	8 (10)	22 (11)	12 (9)	12 (9)	10 (8)	2 (1)	3 (1)	1 (5)
School of Life Science	Genetics	3 (6)	2	2	2	1	1		
	Basic Biology	3 (6)	7 (2)	4 (2)	3 (2)	3 (2)			
	Physiological Sciences	3 (6)	3 (4)	2 (3)	2 (3)	1 (3)	1	1 (1)	
	Subtotal	9 (18)	12 (6)	8 (5)	7 (5)	5 (5)	2	1 (1)	
School of Advanced Sciences	Evolutionary Studies of Biosystems	5 (1)	3 (1)	2 (1)	2 (1)	1 (1)	1		
	Subtotal	5 (1)	3 (1)	2 (1)	2 (1)	1 (1)	1		
Total		41 (59)	112 (68)	62 (36)	44 (32)	33 (24)	11 (8)	5 (8)	1 (7)

() 3-year Doctoral Course [not included in the total] .
 ※ A few people.

Admission of the 2018



Japanese National Universities	
Hokkaido University	1
Hirosaki University	1
Tohoku University	1
Tsukuba University of Technology	1
Chiba University	1
The University of Tokyo	9
Tokyo Institute of Technology	2
The University of Electro-Communication	1
Gifu University	1
Shizuoka University	1
Nagoya University	4
Aichi University of Education	1
Mie University	1
Kyoto University	2
Osaka University	2
Nara Women's University	1
Okayama University	1
Tokushima University	1
Kumamoto University	1
Kagoshima University	1
University of the Ryukyus	1

Japanese Private Universities	
Kansai University	2
Kindai University	1
Keio University	1
Josai University	1
Kanagawa University	1
Soka University	1
Waseda University	2
Tokai University	1
Tokyo University of Science	1
Toho University	1
Nara University	1
Nihon University	3
Kitasato University	1
Azabu University	1
Meiji University	1
Meiji University	2
Ritsumeikan University	1

Japanese Public Universities	
Ishikawa Prefectural University	1
Nagoya City University	1
Kyoto Prefectural University of Medicine	1
University of Hyogo	1

Foreign Universities	
The University of Nottingham	1
University of British Columbia	1
University of Paris-Saclay	1
Peking University	1
University of Science and Technology of China	1
Shanghai Normal University	1
Southwest Medical University	1
Minzu University of China	1
Tianjin Foreign Studies University	1
Inner Mongolia University	1
Soongsil University	1
National Taiwan University	1
Ming Chuan University	1

Others	
National Institute of Technology, Ibaraki College	1
National Institute of Technology, Nara College	1

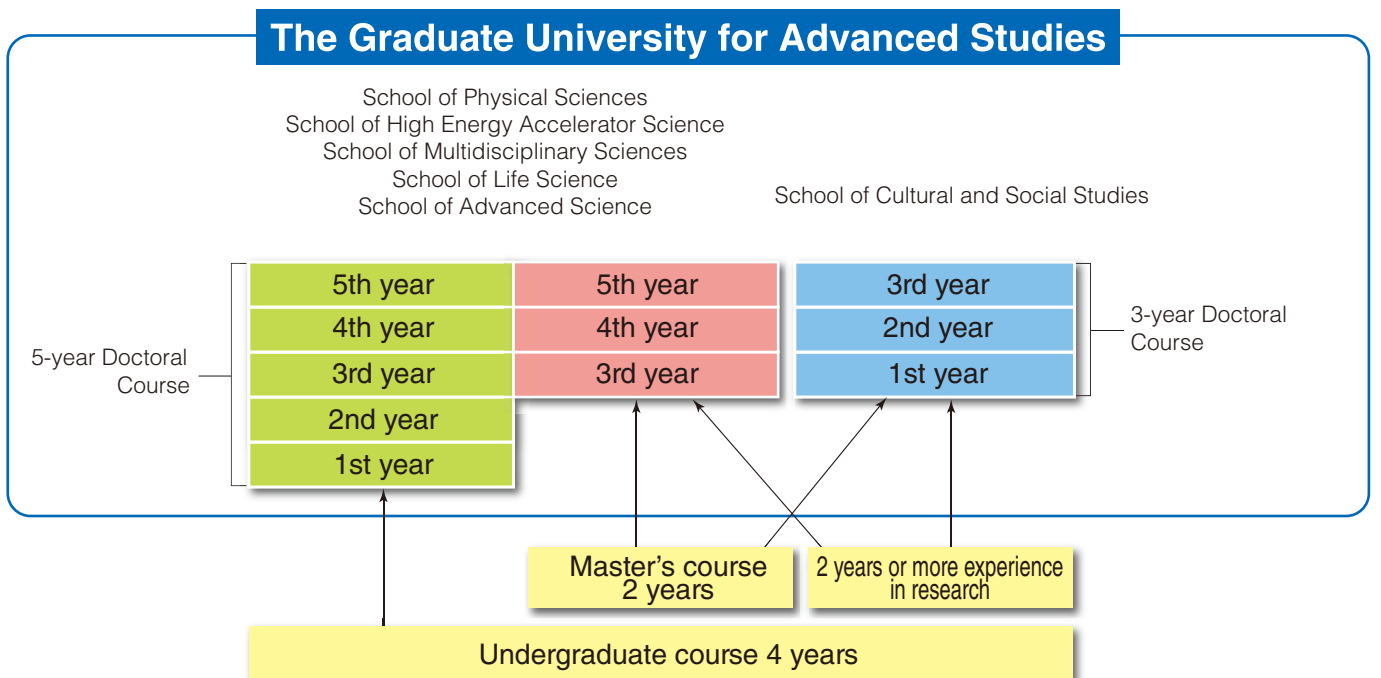
Degrees Awarded

School	Quota	Field	For the period of 1991~2012	'13	'14	'15	'16	'17	Total
School of Cultural and Social Studies	(15)	Literature	93 [21] (40)	3 (1)	5 [4] (2)	5 [4] (1)	5 [1] (3)	4 (1)	115 [30] (48)
		Philosophy	58 [9] (25)	4 [1] (4)	6 [2] (2)	4	3 [2]	4 [1] (3)	79 [15] (34)
School of Physical Sciences	10(15)	Philosophy	58 [0] (11)	0	0	1	2 [1]	1	62 [1] (11)
		Science	336 [13] (32)	19	11 (3)	10 [3]	22 [1]	15 [1]	413 [18] (35)
		Engineering	61 [1] (15)	7 [1]	4 [2] (1)	3	3 (1)	4	82 [4] (17)
School of High Energy Accelerator Science	9(※)	Philosophy	23 [1] (8)	0 (1)	0	0	2	1	26 [1] (9)
		Science	139 [3] (13)	5	8	9	2	4 (1)	167 [3] (14)
		Engineering	43 [0] (21)	1	3	1 (2)	2 [1]	1	51 [1] (23)
School of Multidisciplinary Sciences	8(10)	Statistical Science	22 [1] (3)	1	4 [1]	4	5	4 [1]	40 [3] (3)
		Philosophy	73 [4] (10)	5	2	1	2 [1]	1 [1]	84 [6] (10)
		Science	50 [0] (6)	2	2	2	3	2	61 [0] (6)
		Informatics	86 [5] (0)	9 [1]	10 [1]	14 [2]	22 [4]	7	148 [13] (0)
School of Life Science	9(18)	Philosophy	34 [1] (2)	1	0	1	0	0	36 [1] (2)
		Science	471 [23] (35)	18 [2] (1)	23 [2] (1)	18 [1] (1)	20 [2] (1)	20 [3]	570 [33] (39)
		Medical Science	8 [0] (0)	1	0	1	0	1	11 [0] (0)
School of Advanced Sciences	5(1)	Philosophy	15 [5] (1)	0	0	0	0	0	15 [5] (1)
		Science	45 [7] (2)	2	1	4	0	5 [1]	57 [8] (2)
		Engineering	5 [1] (0)	0	0	0	0	0	5 [1] (0)
Total	41(59)		1620 [95] (224)	78 [5] (7)	79 [12] (9)	78 [10] (4)	93 [13] (5)	74 [8] (5)	2022 [143] (254)

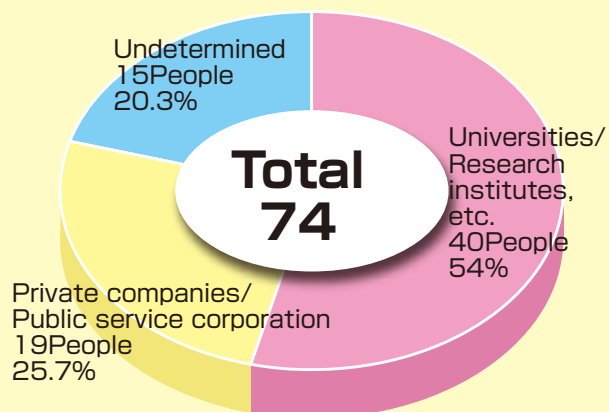
※1 The quota of admission is the one in 2017. (The figures in parentheses is the quota of 3-year doctoral course. The School of High Energy Accelerator Science does not have a specific quota of admission but accepts only a few students.)
 ※2 (): Figures of those who were granted the Ph.D. by way of Dissertation (not included in the total).
 ※3 [] : Figures of those who were granted the Ph.D. within a specified time after leaving the university.
 ※4 The School of Physical Sciences, the School of High Energy Accelerator Science, and the School of Multidisciplinary Sciences were formed from the former School of Mathematical and Physical Science on March 31, 2004.

Requirements for completion of the Ph.D. course

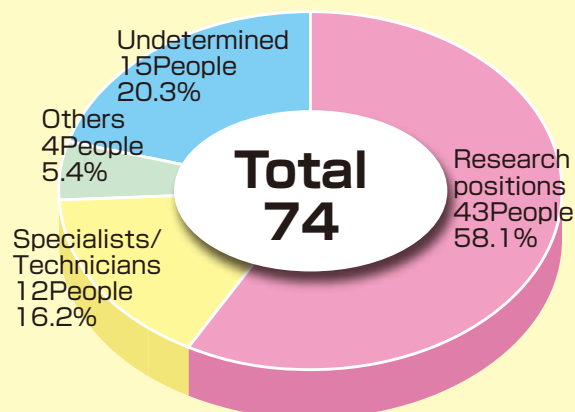
Students are required to be enrolled in SOKENDAI for more than 3 years (five-year course students are required to be enrolled for more than 5 years), earn necessary credits prescribed at each department, take necessary research guidance for a doctoral thesis, and pass an examination for a doctoral thesis. Students who are recognized to have achieved great performance, can graduate in shorter term.



Postgraduate Career Tracking / Profile of the 2017



Type of Industry



Type of Occupation

Universities/Research institutes, etc

- SOKENDAI
- Tohoku University
- Ibaraki University
- The University of Tokyo, Atmosphere and Ocean Research Institute
- Kanazawa University
- Kyoto University
- Kyoto University, Institute for Frontier Life and Medical Sciences
- Japan Advanced Institute of Science and Technology
- Ehime University
- Meiji University
- Ritsumeikan University
- University of Virginia
- École polytechnique fédérale de Lausanne(EPFL)
- Hefei University of Technology
- Qinghai University for Nationalities
- Universitas Gadjah Mada
- University of Information Technology
- Institute for Molecular Science
- The Japan Aerospace Exploration Agency
- High Energy Accelerator Research Organization
- National Institute of Informatics
- National Institute of Genetics
- National Institute for Basic Biology
- National Institute for Physiological Sciences
- Advanced Industrial Science and Technology
- Tokyo Metropolitan Institute of Medical Science
- Max Planck Institute for Astronomy

Research positions: University faculty, Faculty of Inter-University Research Institute, Researchers at Private Research Institute, Postdoctoral researcher, etc.

Others: Clerical staffs, Consultant, Lecturer, etc

Private companies/Public service corporation.....

- Anicom Insurance, Inc.
- Avant Corporation
- Imagineering, Inc.
- Elle Co.,Ltd.
- Kao Corporation
- KDDI CORPORATION
- IBM Japan, Ltd.
- Japan NUS Co., Ltd.
- Japan Tobacco Inc.
- Human Metabolome Technologies, Inc.
- Honda R&D Co.,Ltd.
- Yokogawa Electric Corporation
- Rakuten, Inc.
- The Museum of Modern Art, Shiga
- Atsumi Hospital
- St. JOSEPH's Jounior & Senior High School
- National Statistics Center
- Japan Bird Research Association

International Exchange

Number of International Students by Department

(As of May 1, 2018)

School	Department	Quota		1st year		2nd year		3rd year (1st year**)		4th year (2nd year**)		5th year (3rd year**)		Subtotal		Research Student								
		Doctoral Course	3-year	*1	*2	*1	*2	*1	*2	*1	*2	*1	*2	*1	*2	*1	*2							
		5-year	3-year																					
School of Cultural and Social Studies	Regional Studies		3					3	1	1	2	1		4	3		9	5	1	1	1			
	Comparative Studies		3					1			1			5	3	2	7	3	2					
	Japanese Studies		3					2	2	1	2	2		3	2		7	6	1	4	1	2		
	Japanese History		3														0	0	0					
	Japanese Literature		3														0	0	0	1	1			
	Subtotal	0	15	0	0	0	0	0	0	6	3	2	5	3	0	12	8	2	23	14	4	6	3	2
School of Physical Sciences	Structural Molecular Science	2	3	1					1					2		1	4	0	1					
	Functional Molecular Science	2	3				1	1	1	2		1	2	1	1	1	6	2	3					
	Astronomical Science	2	3	1		1			2	1	2	1	1	1			4	2	4					
	Fusion Science	2	3	1	1	1					3	1	2	2		2	6	2	5					
	Space and Astronomical Science	2	3				1		1	2		2		1		1	4	0	4	2		2	2	
	Subtotal	10	15	3	1	2	2	1	2	7	1	5	6	2	4	6	1	4	24	6	17	2	0	2
School of High Energy Accelerator Science	Accelerator Science	2	a few	2		1	1	1	3		3	4	1	2	2	2	1	12	3	8				
	Materials Structure Science	3	a few	1		1	1	1	1	1				2	1	2	5	2	4					
	Particle and Nuclear Physics	4	a few	1		1			1	1	1			2	1	1	5	1	3					
		Subtotal	9	—	4	0	3	2	1	2	5	0	4	5	1	2	6	4	4	22	6	15	0	0
School of Multidisciplinary Sciences	Statistical Science	2	3									2	1				2	1	0					
	Polar Science	2	1														0	0	0					
	Informatics	4	6	12	3	2	4	2	2	12	2	5	9		4	14	2	6	51	9	19			
	Subtotal	8	10	12	3	2	4	2	2	12	2	5	11	1	4	14	2	6	53	10	19	0	0	0
School of Life Science	Genetics	3	6	4	3	3	3	3	2	2	2		1		1	1		11	8	6	2		2	
	Basic Biology	3	6	1	1	1	1		1	1	1	1	1	1	3	1		7	2	4				
	Physiological Sciences	3	6	1	1				2	1		4	4	4	1		1	8	6	5				
	Subtotal	9	18	6	5	4	4	3	3	5	3	1	6	4	6	5	1	1	26	16	15	2	0	2
School of Advanced Sciences	Evolutionary Studies of Biosystems	5	1												3	3	2	3	3	2				
		Subtotal	5	1	0	0	0	0	0	0	0	0	0	0	0	3	3	2	3	3	2	0	0	0
	Total	41	59	25	9	11	12	7	9	35	9	17	33	11	16	46	19	19	151	55	72	10	3	6

*1 Female Students in Total *2 Monbukagakusho Scholarship Students in Total ** The year of a 3-year doctoral course.

Number of International Students

(As of May 1, 2018)

Country or Region	1st year			2nd year			3rd year (1st year**)			4th year (2nd year**)			5th year (3rd year**)			Subtotal		Research Student				
	*1	*2		*1	*2		*1	*2		*1	*2		*1	*2		*1	*2	*1	*2			
Asia	23	8	10	11	7	8	29	7	14	30	10	14	40	19	16	133	51	62	6	2	2	
India	3	2	3				1		1	5	1	4	1			10	3	8				
Indonesia				1	1	1				3	1	1	4	3	3	8	5	5				
Thailand	2	1	1	2	1	2	2		1	3	1	2	4	1	2	13	4	8				
Pakistan				3	2	3	2		1							5	2	4				
Bangladesh				1	1		1		1							2	1	1				
Philippines													1			1	0	0				
Viet Nam	5	3	3	3	1	2	4	2	2	3		2	7	4	4	22	10	13	1		1	
Malaysia							2	1	1				1			3	1	1				
Korea	3	1	1							2	1	1				5	2	2				
China	8	1	2	1	1		15	4	7	13	5	4	18	8	7	55	19	20	5	2	1	
Taiwan	2						2			1	1		4	3		9	4	0				
Africa	0	0	0	1	0	1	1	0	0	0	0	0	0	0	0	2	0	1	1		1	
Uganda																0	0	0	1		1	
Egypt							1									1	0	0				
South Africa				1		1										1	0	1				
Oceania	0	0	0	0	0	0	0	0	0	0	0	0	2	0	1	2	0	1				
Australia													1			1	0	0				
New Zealand													1		1	1	0	1				
Europe	1	1	1	0	0	0	3	1	2	1	1	1	3	0	2	8	3	6	2	1	2	
Kazakhstan	1	1	1													1	1	1				
Spain																0	0	0	1		1	
Hungary							1		1							1	0	1	1	1	1	
France							2	1	1				2		1	4	1	2				
Belarus													1		1	1	0	1				
Russia										1	1	1				1	1	1				
Middle East	0	0	0	0	0	0	1	0	1	0	0	0	1	0	0	2	0	1				
Iran													1			1	0	0				
Turkey							1		1							1	0	1				
Latin America and the Caribbean	0	0	0	0	0	0	0	0	0	1	0	0	0	0	0	1	0	0				
Argentina										1						1	0	0				
North America	1	0	0	0	0	0	1	1	0	1	0	1	0	0	0	3	1	1	1	0	1	
USA							1	1		1						2	1	1				
Canada	1															1	0	0				
Mexico																0	0	0	1		1	
	Total	25	9	11	12	7	9	35	9	17	33	11	16	46	19	19	151	55	72	10	3	6

*1 Female Students in Total *2 Monbukagakusho Scholarship Students in Total ** The year of a 3-year doctoral course.

International Exchange Agreements

SOKENDAI is promoting academic exchange and collaboration with other domestic and foreign universities through mutual agreements.

Academic Agreement with Foreign Institutions

University / Department [Country or Region]	Corresponding Department	Contents	Date of Agreement	Validity
University of Science and Technology [Korea]	All Schools	Exchange of students and researchers	May 25, 2005 May 25, 2010	May 24, 2020
Chulalongkorn University Faculty of Science [Thailand]	School of Physical Sciences	Exchange of students and researchers	April 1, 2010	March 23, 2020
Kasetsart University Faculty of Science [Thailand]	School of Physical Sciences	Exchange of students and researchers	March 29, 2011	March 10, 2021
Indian Institute of Science Education and Research PUNE [India]	School of Life Science	Exchange of students and researchers	April 18, 2011	April 16, 2021
Mahidol University Faculty of Science [Thailand]	School of Physical Sciences	Exchange of students and researchers	March 20, 2014	March 19, 2019
Nanyang Technological University College of Science [Singapore]	School of Physical Sciences	Exchange of students and researchers	March 20, 2014	March 19, 2019
University of Malaya Faculty of Science [Malaysia]	School of Physical Sciences	Exchange of students and researchers	March 24, 2014	March 23, 2019
VNU University of Science Faculty of Biology [Vietnam]	School of Advanced Sciences	Exchange of students and researchers	February 8, 2017	February 7, 2022
Vietnam National University of Agriculture Faculty of Animal Science [Vietnam]	School of Advanced Sciences	Exchange of students and researchers	February 15, 2017	February 14, 2022
Vietnam Academy of Social Sciences Institute of Archaeology [Vietnam]	School of Advanced Sciences	Exchange of researchers	February 20, 2017	February 19, 2022
National Taiwan University College of Bioresources and Agriculture [Taiwan]	School of Advanced Sciences	Exchange of students and researchers	December 28, 2017	December 27, 2022
The University of HAWAII at MANOA [USA]	School of Cultural and Social Studies	Exchange of students and researchers	February 28, 2018	February 27, 2023

Academic Agreement with Domestic Institutions

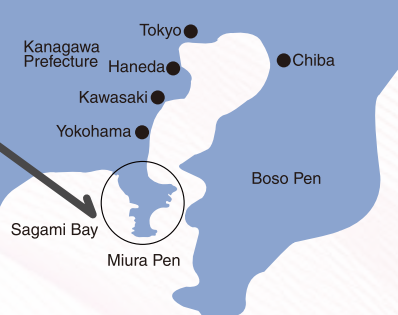
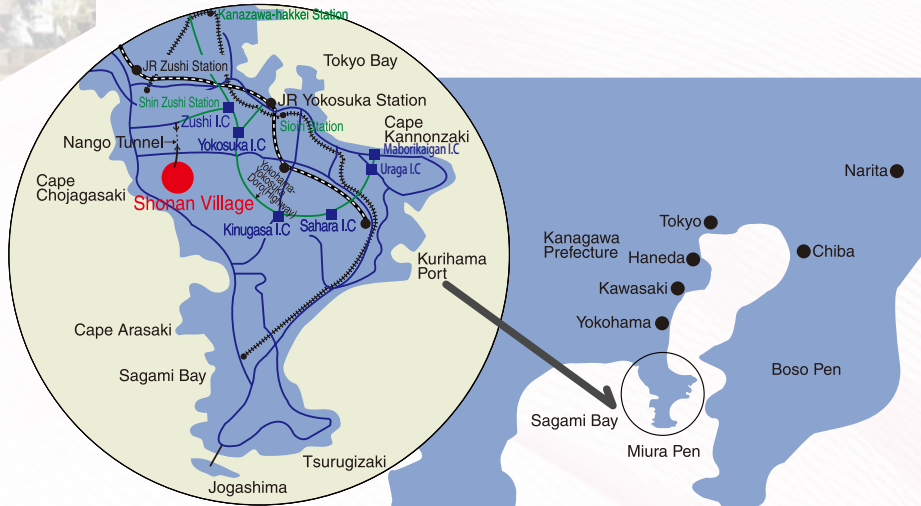
University / Institute	Corresponding Department	Contents	Date of Agreement
Tokyo Institute of Technology All Schools	All Schools	Exchange of students	April 3, 1995
Ochanomizu University All Schools	All Schools	Exchange of students	April 3, 1995
Nagoya University Graduate School of Medicine	Department of Physiological Sciences of School of Life Science	Exchange of students	April 3, 1995
Nagoya University Graduate School of Engineering	School of Physical Sciences	Exchange of students	April 1, 2010
University of Tokyo Graduate School of Science	School of Physical Sciences / High Energy Accelerator Sciences / Multidisciplinary Sciences	Exchange of students	March 27, 1998
University of Tokyo Graduate School of Information Science and Technology	School of Physical Sciences / High Energy Accelerator Sciences / Multidisciplinary Sciences / Life Science / Advanced Sciences	Exchange of students	March 27, 1998
International Christian University Graduate School of Arts and Science	All Schools	Exchange of students	March 24, 2000
Kyoto University Graduate School of Asian and African Area Studies	Department of Regional Studies / Comparative Studies of School of Cultural and Social Studies	Exchange of students	April 1, 2005
Osaka University Graduate School of Human Sciences	Department of Regional Studies / Comparative Studies of School of Cultural and Social Studies	Exchange of students	April 1, 2005
Kobe University Graduate School of Intercultural Studies / Human Development and Environment	Department of Regional Studies / Comparative Studies of School of Cultural and Social Studies	Exchange of students	April 1, 2005
Kyoto Bunkyo University Graduate School of Anthropology	Department of Regional Studies / Comparative Studies of School of Cultural and Social Studies	Exchange of students	April 1, 2005
Chiba University Graduate School of Humanities and Studies of Public Affairs	School of Cultural and Social Studies	Exchange of students	April 1, 2005
Chiba University Graduate School of Science and Engineering	School of Physical Sciences	Exchange of students	April 1, 2010
Japan Advanced Institute of Science and Technology Graduate School of Advanced Science and Technology	Department of Informatics of School of Multidisciplinary Sciences	Exchange of students	April 1, 2009
Tsuda College Graduate Program in Mathematics and Computer Science	School of Multidisciplinary Science	Exchange of students	April 1, 2015
Waseda University School of Fundamental Science and Engineering	School of Multidisciplinary Science	Exchange of students	April 1, 2015
Kyushu University Graduate School of Pharmaceutical Sciences	School of Life Science	Exchange of students	April 1, 2017
Hosei University Graduate School of Sciences and Engineering	School of Physical Sciences	Exchange of students	April 1, 2018



National University
SOKENDAI
 The Graduate University for Advanced Studies
 Shonan Village, Hayama, Kanagawa 240-0193 Japan
 Tel.81-46-858-1500 / Fax.81-46-858-1542
<https://www.soken.ac.jp/>



Access (Hayama Campus)



Access by train or bus

- Zushi Station of JR Yokosuka Line (East Exit)
 - ▶ Take Keikyu Bus No. 16 or 26 bound for "Shonan Kokusaimura" on Track # 1 and get off at "Shonan Kokusaimura Center Mae." Approx. 25 min. Cost: 340 yen.
 - ▶ Take Keikyu Bus bound for "Shonan Sajima Nagisa No Oka" on Track # 2 and get off at "Shonan Kokusaimura Makado-sawa Choseichi." Approx. 20 min. Cost: 320 yen.
 - Shin Zushi Station of Keikyu Zushi Line (South Exit)
 - ▶ Take Keikyu Bus No. 16 or 26 bound for "Shonan Kokusaimura" on Track # 1 and get off at "Shonan Kokusaimura Center Mae." Approx. 23 min. Cost: 340 yen.
 - ▶ Take Keikyu Bus bound for "Shonan Sajima Nagisa No Oka" on Track # 1 and get off at "Shonan Kokusaimura Makado-sawa Choseichi." Approx. 18 min. Cost: 320 yen.
 - Shiiori Station of Keikyu Line
 - ▶ Take Keikyu Bus No. 16 bound for "Shonan Kokusaimura" on Track # 2 and get off at "Shonan Kokusaimura Center Mae." Approx. 30 min. Cost: 370 yen.
 - YCAT (Expressway Bus)
 - ▶ Take a bus bound for "Denryoku Chuo Kenkyujo" (For Yokosuka West Side) on Track # 6 of Yokohama City Air Terminal and get off at "Shonan Kokusaimura Center Mae." Approx. 45 min. Cost: 900 yen.
- Note) 3-minute walk from "Shonan Kokusaimura Center Mae" or 10-minute walk from "Shonan Kokusaimura Makado-sawa Choseichi" to the University.

Access by car

- Zushi Interchange of Yokohama-Yokosuka Road (toll way)
 After going out of the exit of Zuyō-Shindo Route (toll way), turn left at the first intersection. Through the Nango Tunnel, go straight on the street for about 5 minutes. Then, turn left at the "Shonan Kokusaimura Center Iriguchi" intersection and keep driving for about 1 minute to the University.